

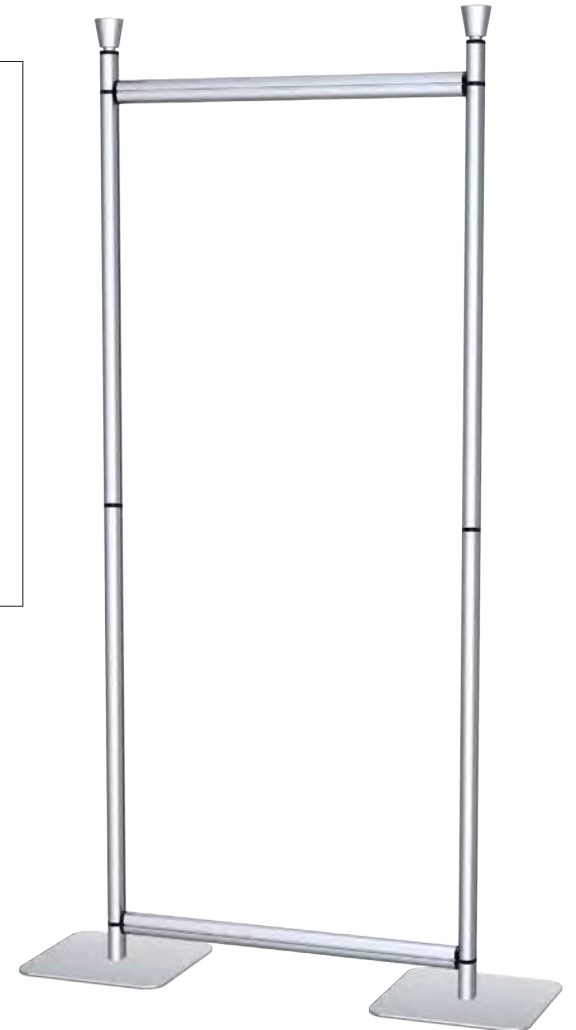
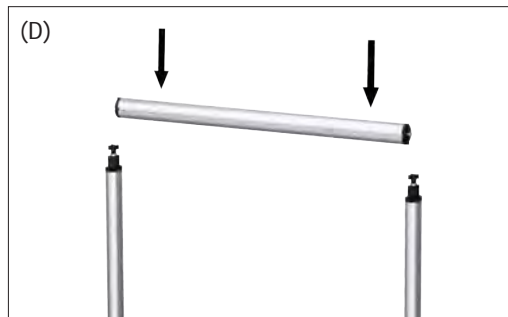
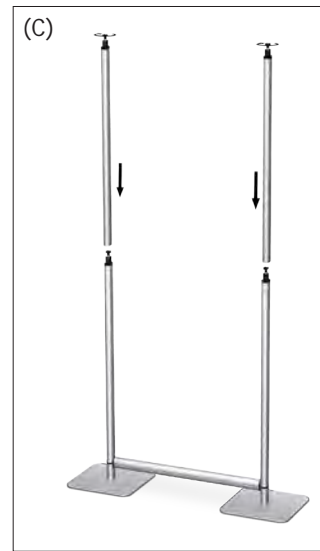
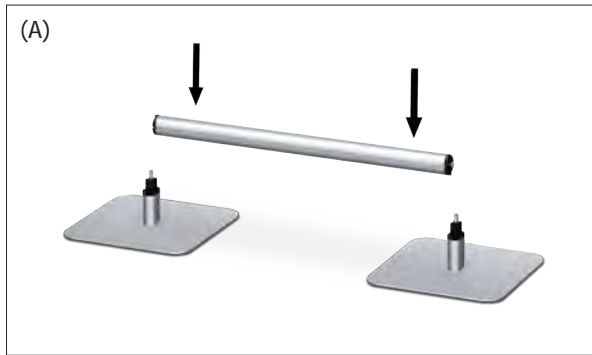
Visual Merchandising (Creo™)

Applicable Products:

CR Double Pole
(Two-Section)

**NOTE: Most upright components must be installed before completing unit assembly.
End user determines component location.**

1. Press bottom crossbar into base upright channels (fig. A).
2. Slide uprights over base uprights and tighten knobs to secure, using cone top as a tightening tool (fig. B).
3. Attach next upright to lower upright and tighten knobs to secure, using cone top as a tightening tool (fig. C).
4. Press top crossbar into upright channels (fig. D).
5. Slide cones over uprights and tighten cones to secure (fig. E).



Visual Merchandising (Creo™)

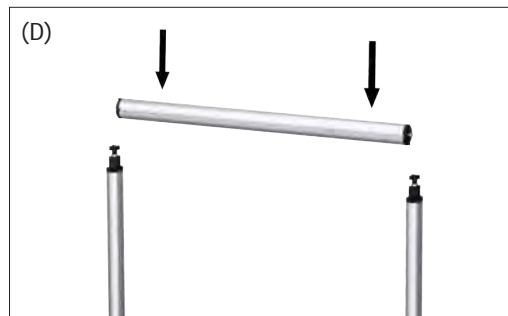
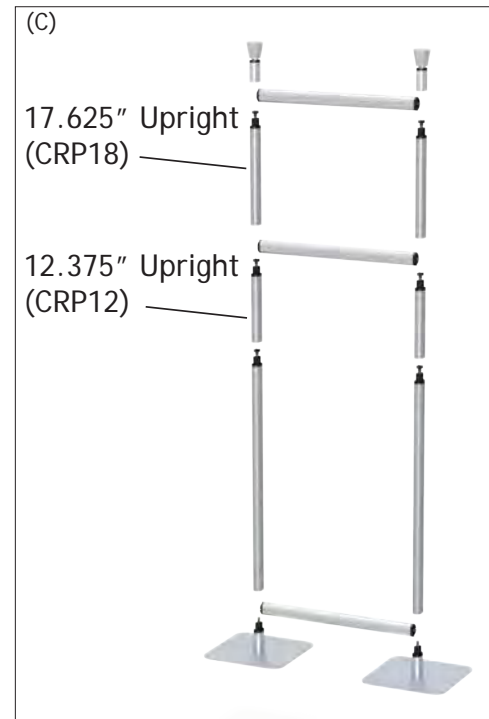
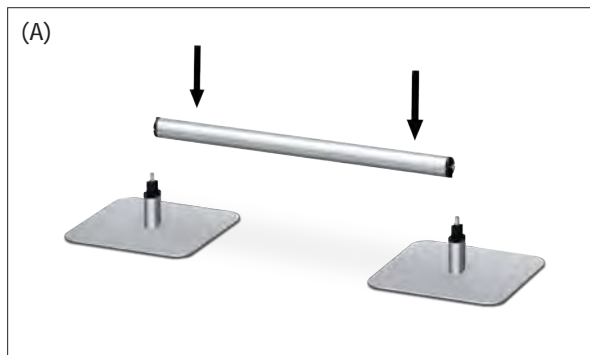
Applicable Products:

CR Double Pole - 84" Height
with Plasma

**NOTE: Most upright components must be installed before completing unit assembly.
End user determines component location.**

1. Press bottom crossbar into base upright channels (fig. A).
2. Slide uprights over base uprights and tighten knobs to secure, using cone top as a tightening tool (fig. B).
3. Attach the 12.375", followed by the lower plasma bracket crossbar, by repeating the connections of steps 1 and 2 (fig. C).
4. Attach the 17.625" uprights to the 12.375" uprights and tighten knobs to secure, using cone top as a tightening tool (fig. C).
5. Press top crossbar into upright channels (fig. D).
6. Slide cones over uprights and tighten cones to secure (fig. E).

NOTE: Although model shown below may differ from your model, assembly instructions remain the same.



Visual Merchandising (Creo™)

Applicable Products:

Plasma Brackets (CRPB)

**NOTE: Most upright components must be installed before completing unit assembly.
End user determines component location.**

1. Insert puck glides into bottom crossbar channel (fig. A-1). Slide puck glides to desired location (fig. A-2).
2. Hook video bracket over top crossbar (fig. B-1) and align bottom hole with puck glide on bottom crossbar (fig. B-2).
3. Screw puck onto puck glide to secure brackets (fig. C-1 & fig. C-2).
4. Screw TV unit onto brackets (fig. D).



Visual Merchandising (Creo™)

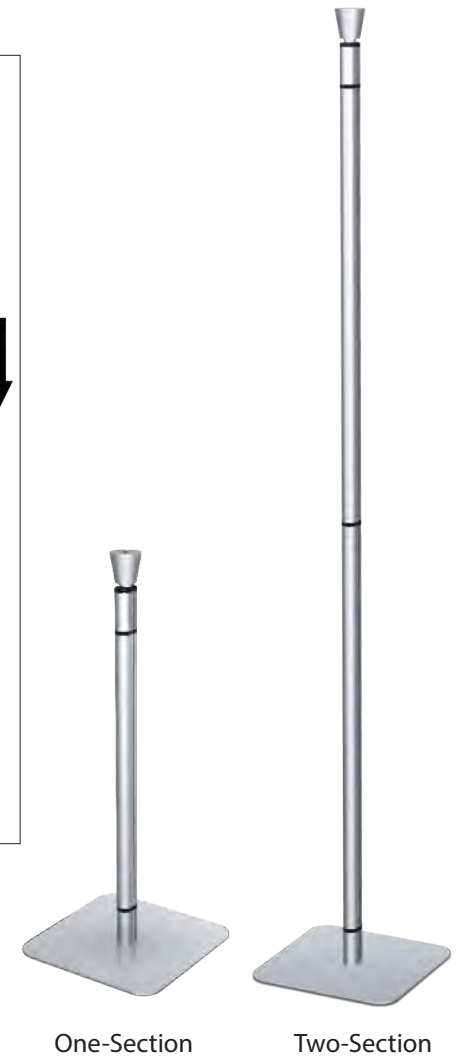
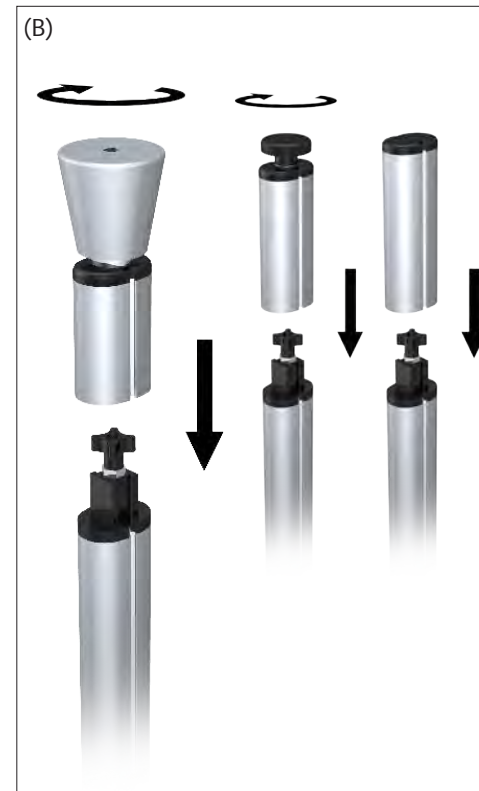
Applicable Products:

**NOTE: Most upright components must be installed before completing unit assembly.
End user determines component location.**

- CR Single Pole:
- One-Section,
 - Two-Section,
 - > Two-Section

1. Connect uprights to base upright and tighten knob, using top as a tightening tool (fig. A).
2. Slide top over upright and tighten to secure. (fig. B)

NOTE: Model shown below may differ from your model. While the number of uprights may change, assembly instructions remain the same.



One-Section

Two-Section

Visual Merchandising (Creo)

Applicable Products:

MAIN STRUCTURE ASSEMBLY INSTRUCTIONS

SEE ATTACHED PAGES FOR DETAILED INSTRUCTIONS

1. Arrange all bases on floor, then attach all lower crossbars to base uprights by inserting button head into channel.
2. Slide all lower uprights over base uprights, then tighten knob of upright to secure, using top as tightening tool.
3. Slide uprights over lower uprights, then tighten knob of upright to secure, using top as tightening tool.
4. Attach all upper crossbars to upper uprights by inserting button head into channel.
5. Slide cone tops over upper uprights, then tighten cone top to secure.
6. Connect tower top to cone top using the puck screw provided.
7. See additional pages for accessory instructions.

NOTE: Although model shown below may differ from your model, assembly instructions remain the same.



Step 1



Step 2



Step 3



Step 4



Step 5



Step 6



Tri Tower



Quad Tower

Visual Merchandising (Creo)

Applicable Products:

MAIN STRUCTURE ASSEMBLY INSTRUCTIONS

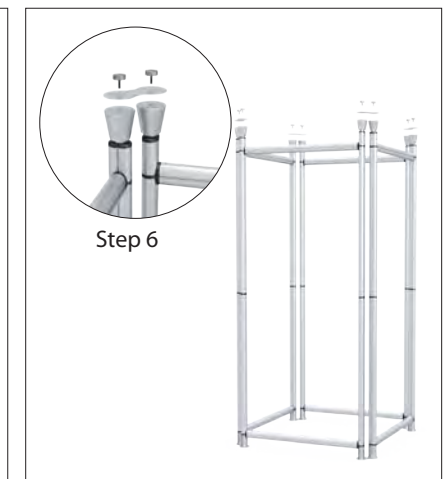
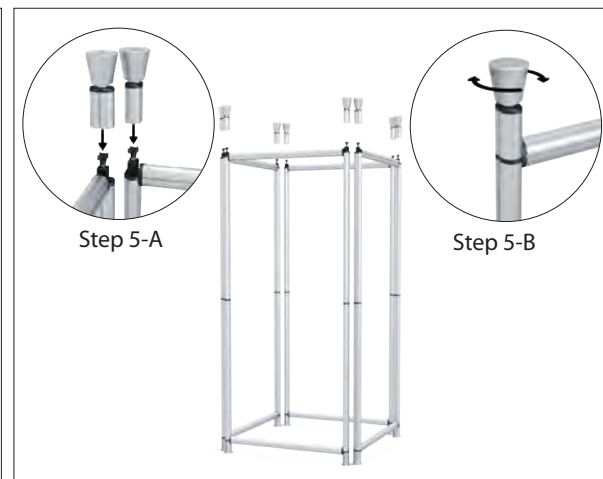
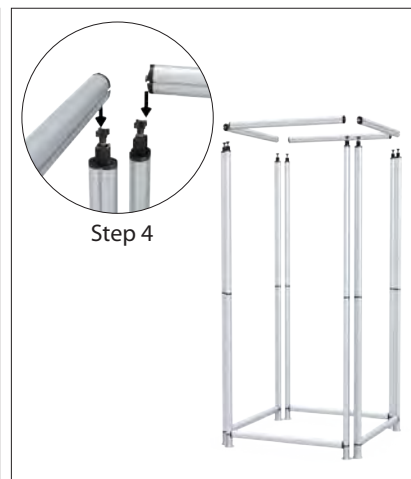
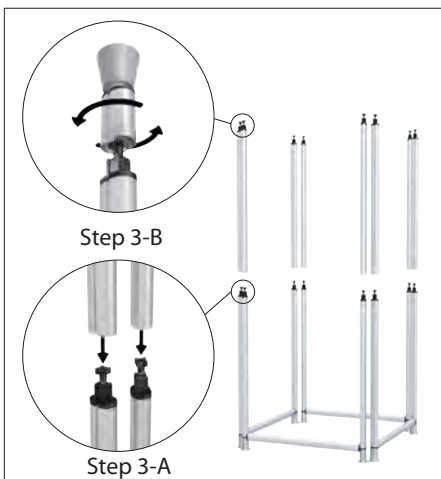
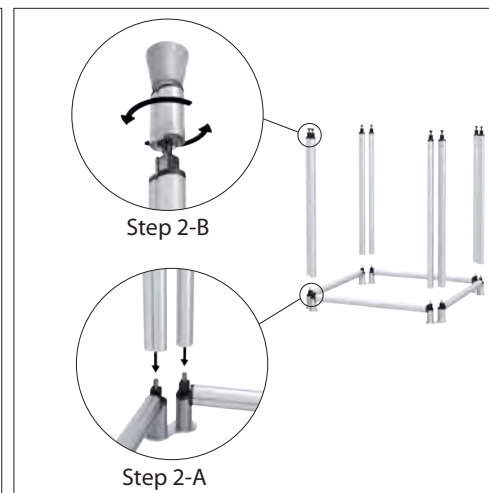
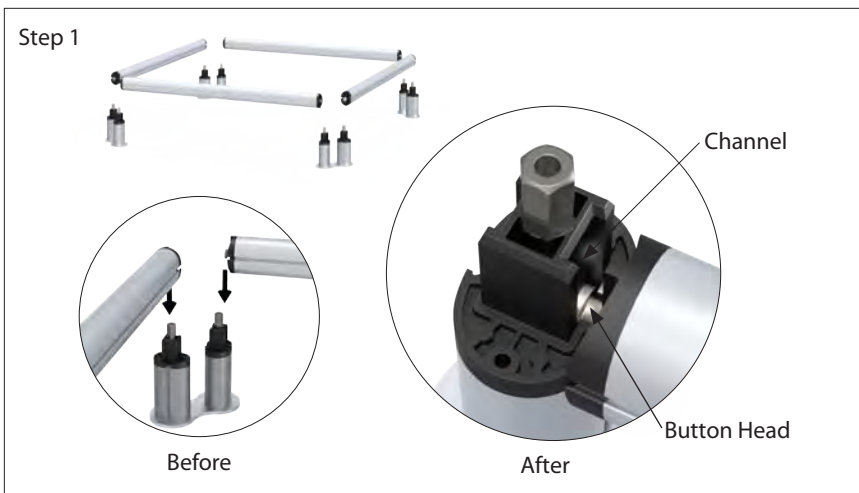
1. Arrange all bases on floor, then attach all lower crossbars to base uprights by inserting button head into channel.
2. Slide all lower uprights over base uprights, then tighten knob of upright to secure, using top as tightening tool.
3. Slide uprights over lower uprights, then tighten knob of upright to secure, using top as tightening tool.
4. Attach all upper crossbars to upper uprights by inserting button head into channel.
5. Slide cone tops over upper uprights, then tighten cone top to secure.
6. Connect tower top to cone top using the puck screw provided.
7. See additional pages for accessory instructions.

NOTE: Although model shown below may differ from your model, assembly instructions remain the same.



Tri Tower

Quad Tower



Visual Merchandising (Creo)

Applicable Products:

MAIN STRUCTURE ASSEMBLY INSTRUCTIONS

SEE ATTACHED PAGES FOR DETAILED INSTRUCTIONS

1. Arrange all bases on floor, then attach all lower crossbars to base uprights by inserting button head into channel.
2. Slide all lower uprights over base uprights, then tighten knob of upright to secure, using top as tightening tool.
3. Slide uprights over lower uprights, then tighten knob of upright to secure, using top as tightening tool.
4. Attach all upper crossbars to upper uprights by inserting button head into channel.
5. Slide cone tops over upper uprights, then tighten cone top to secure.
6. See additional pages for accessory instructions.

NOTE: Although model shown below may differ from your model, assembly instructions remain the same.

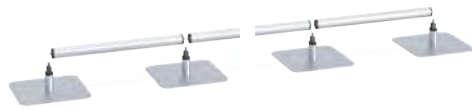


3-Pole

4-Pole



Larger



Step 1



Step 2



Step 3



Step 4



Step 5

Visual Merchandising (Creo)

Applicable Products:

MAIN STRUCTURE ASSEMBLY INSTRUCTIONS

1. Arrange all bases on floor, then attach all lower crossbars to base uprights by inserting button head into channel.
2. Slide all lower uprights over base uprights, then tighten knob of upright to secure, using top as tightening tool.
3. Slide uprights over lower uprights, then tighten knob of upright to secure, using top as tightening tool.
4. Attach all upper crossbars to upper uprights by inserting button head into channel.
5. Slide cone tops over upper uprights, then tighten cone top to secure.
6. See additional pages for accessory instructions.

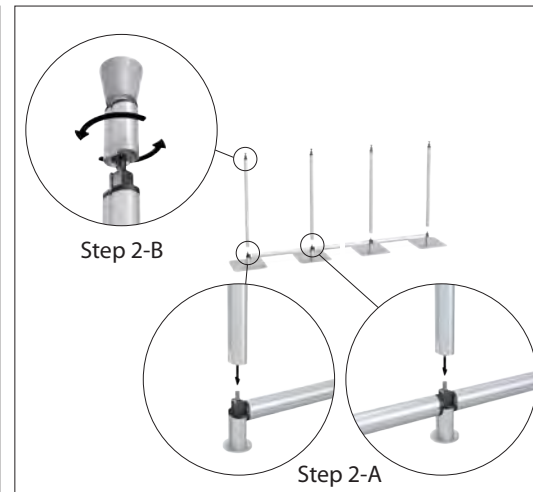
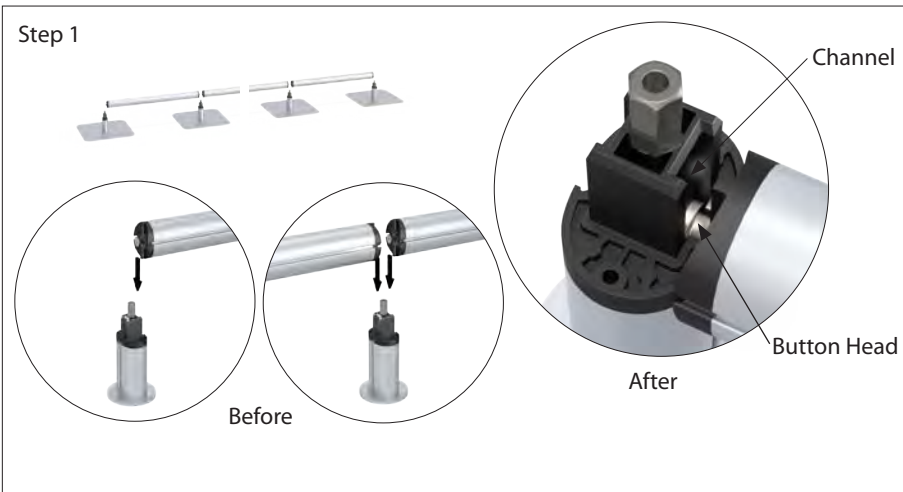


3-Pole

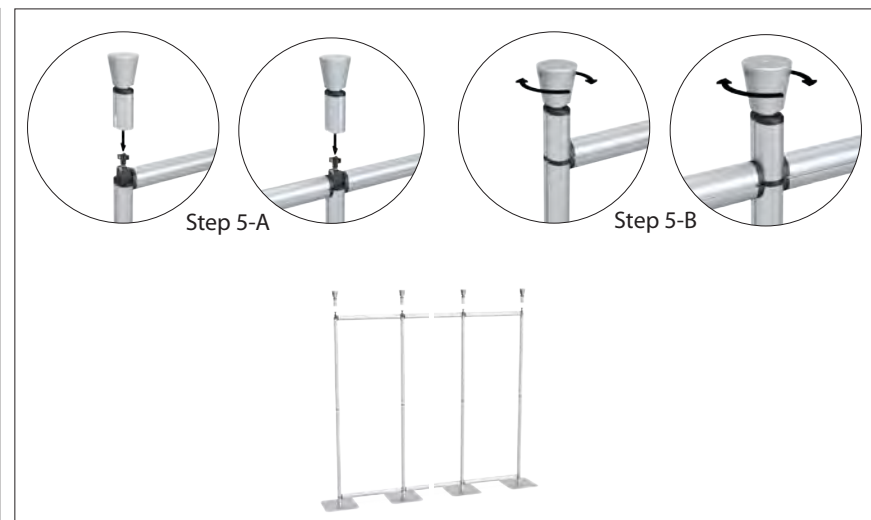
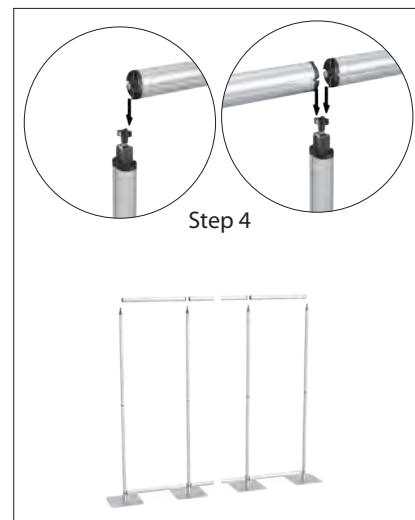
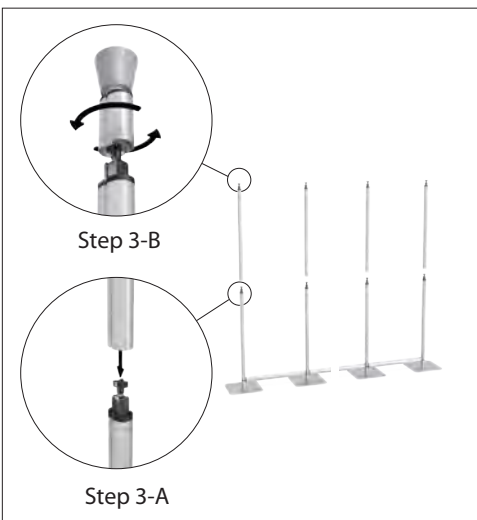


4-Pole

NOTE: Although model shown below may differ from your model, assembly instructions remain the same.



Larger



Visual Merchandising (Creo)

MAIN STRUCTURE ASSEMBLY INSTRUCTIONS

SEE ATTACHED PAGES FOR DETAILED INSTRUCTIONS

1. Arrange all bases on floor, then attach all lower crossbars to base uprights by inserting button head into channel.
2. Slide all lower uprights over base uprights, then tighten knob of upright to secure, using top as tightening tool.
3. Slide uprights over lower uprights, then tighten knob of upright to secure, using top as tightening tool.
4. Attach crossbars and uprights for Plasma TV location. Tighten knob of upright to secure, using top as tightening tool.
5. Attach all upper crossbars to upper uprights by inserting button head into channel.
6. Slide cone tops over upper uprights, then tighten cone top to secure.
7. See additional pages for accessory instructions.

NOTE: Although model shown below may differ from your model, assembly instructions remain the same.

Applicable Products:



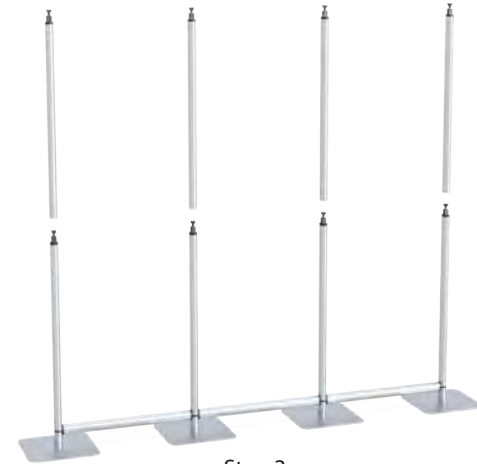
Structure with
Crossbars for
Plasma TV



Step 1



Step 2



Step 3



Step 4



Step 5



Step 6

Visual Merchandising (Creo)

Applicable Products:

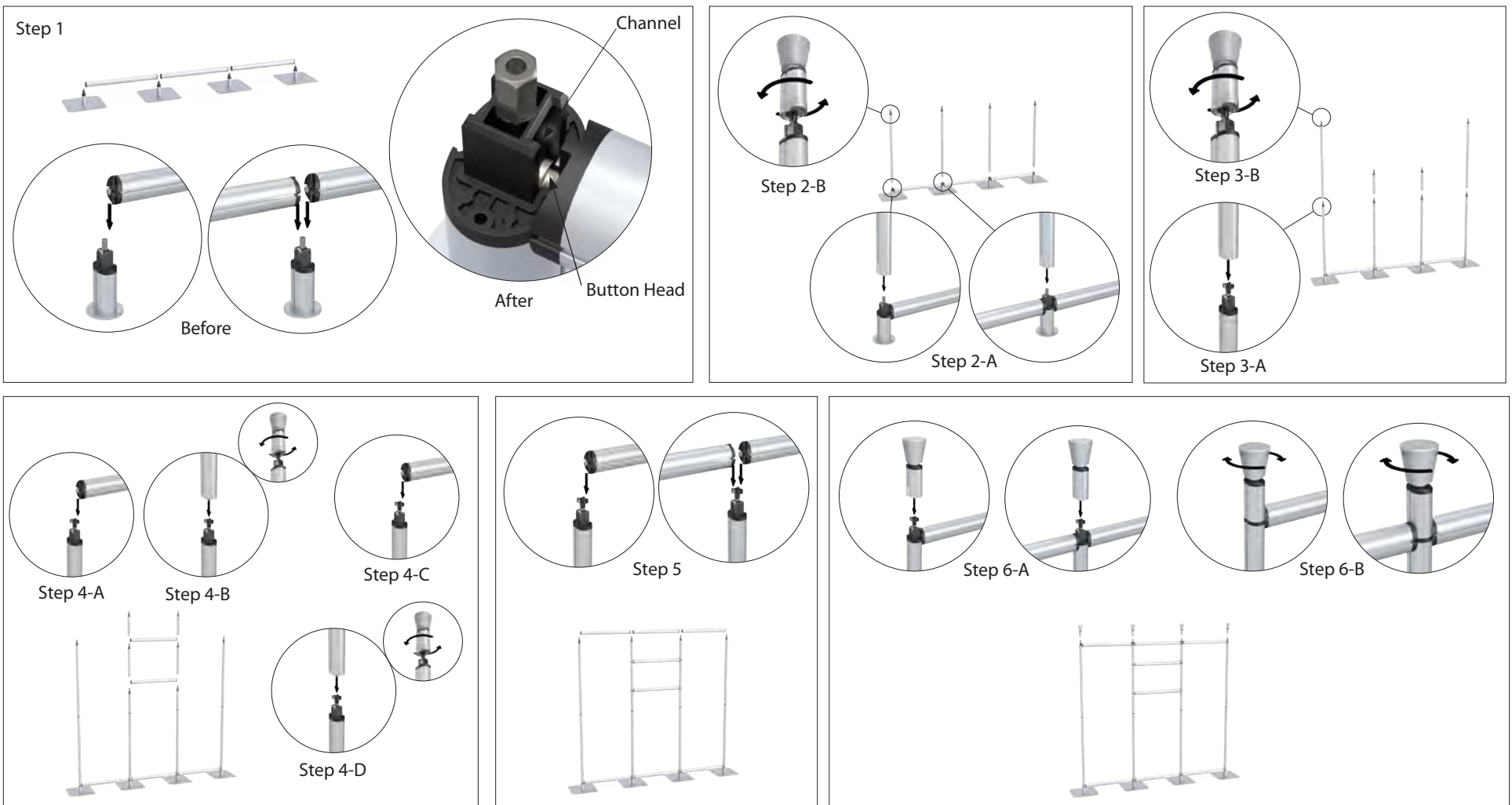
MAIN STRUCTURE ASSEMBLY INSTRUCTIONS

1. Arrange all bases on floor, then attach all lower crossbars to base uprights by inserting button head into channel.
2. Slide all lower uprights over base uprights, then tighten knob of upright to secure, using top as tightening tool.
3. Slide uprights over lower uprights, then tighten knob of upright to secure, using top as tightening tool.
4. Attach crossbars and uprights for Plasma TV location. Tighten knob of upright to secure, using top as tightening tool.
5. Attach all upper crossbars to upper uprights by inserting button head into channel.
6. Slide cone tops over upper uprights, then tighten cone top to secure.
7. See additional pages for accessory instructions.



Structure with Crossbars for Plasma TV

NOTE: Although model shown below may differ from your model, assembly instructions remain the same.



Visual Merchandising (Creo)

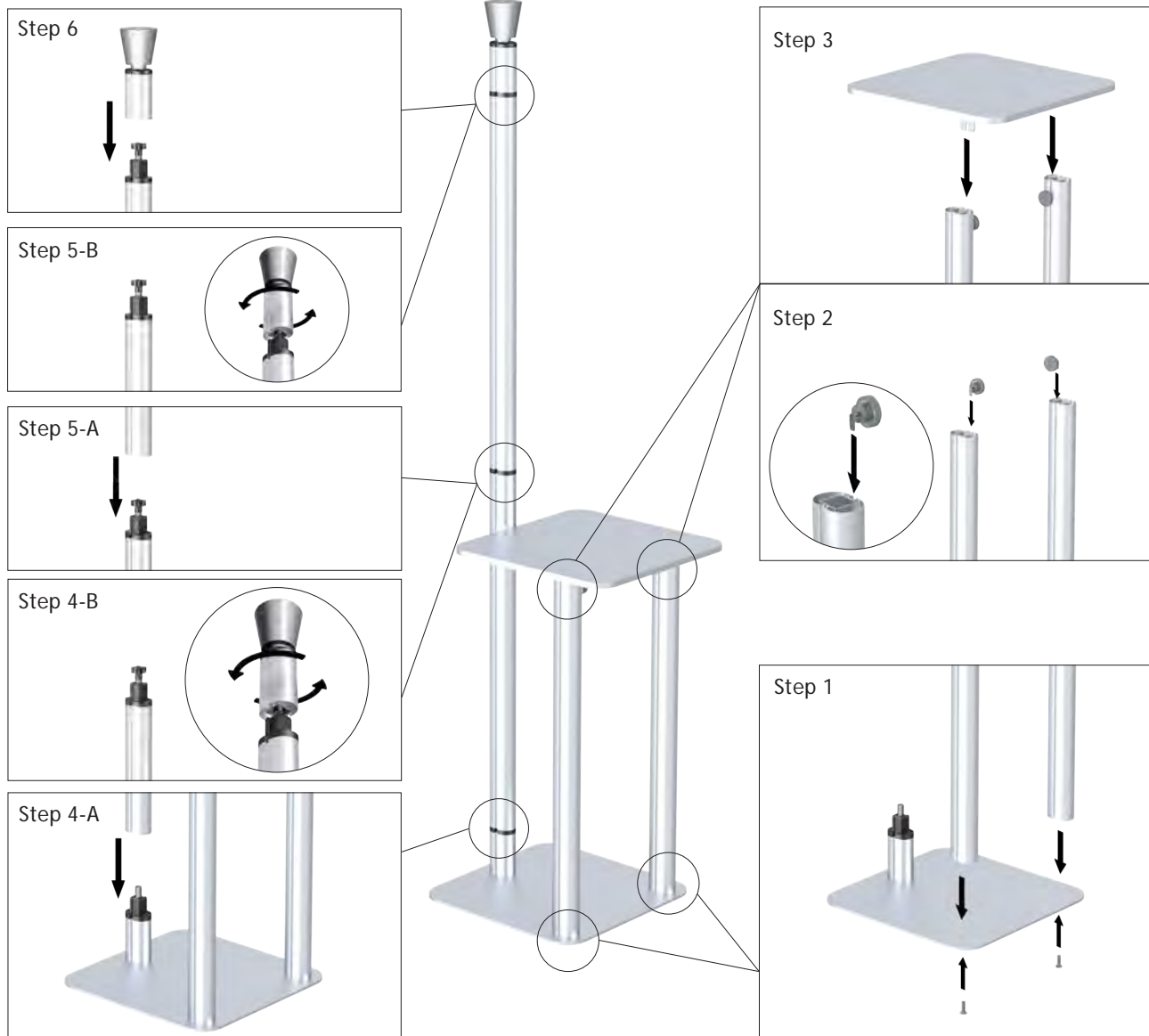
1. Attach front uprights to base, using hex key and screws provided.
2. Insert puck and glide screws into channel of uprights.
3. Position shelf onto glide screws and tighten puck to secure shelf.
4. Slide rear lower upright over base upright and tighten to secure using top as tightening tool.
5. Slide rear upper upright over lower upright and tighten to secure using top as tightening tool.
6. Slide top over upper upright and press firmly downward to secure. If top has cone or knob, turn cone or knob to fully secure.

Applicable Products:

Kiosk Base

CRKB1 (Single)

CRKB2 (Double)



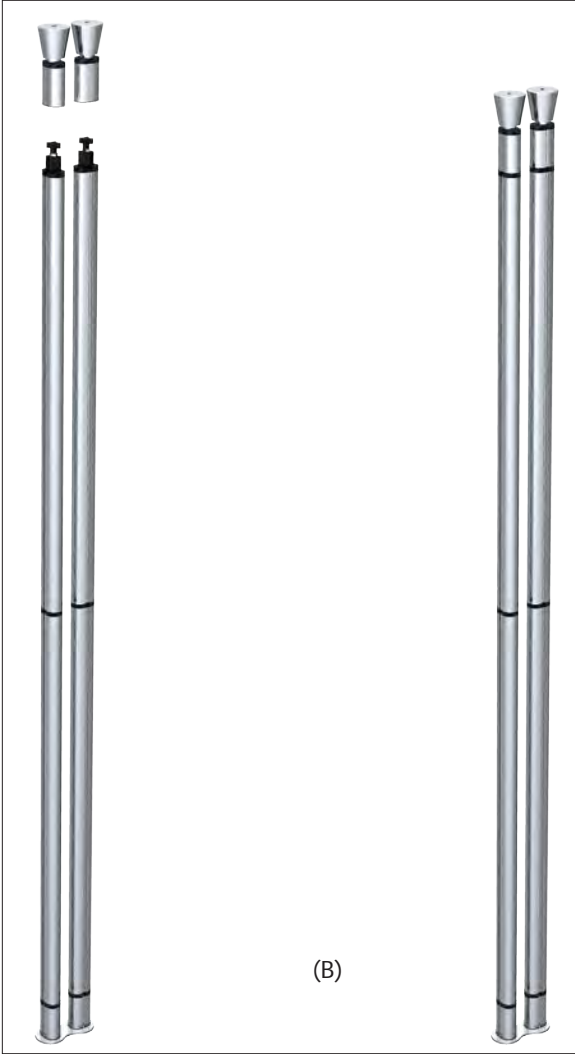
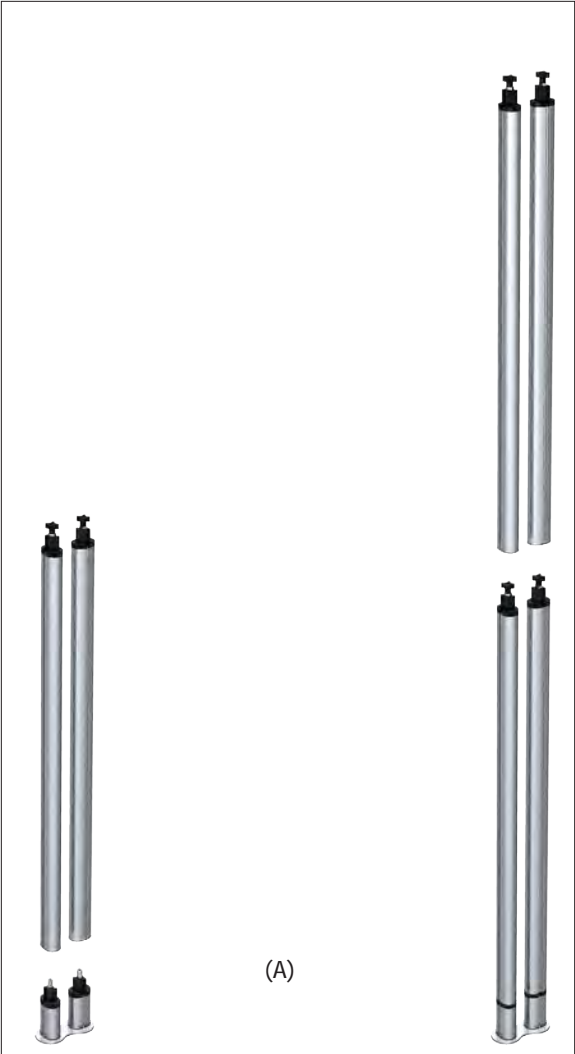
CRKB1 shown

Visual Merchandising (Creo)

Applicable Products:

Bases (CRBPD)

- 1. Slide uprights over base uprights and tighten knobs to secure (fig. A).
- 2. Slide cones over uprights and tighten cones to secure (fig. B).



NOTE: CREO instruction sheets are meant to act as a reference guide to help you install your unit. In some cases, images shown in the instruction sheet will differ from your custom product. However, the installation concepts remain the same. End user will determine where additional components are placed. Please refer to additional CREO instruction sheets where applicable. Most importantly: **Always remember to work from the bottom up!**

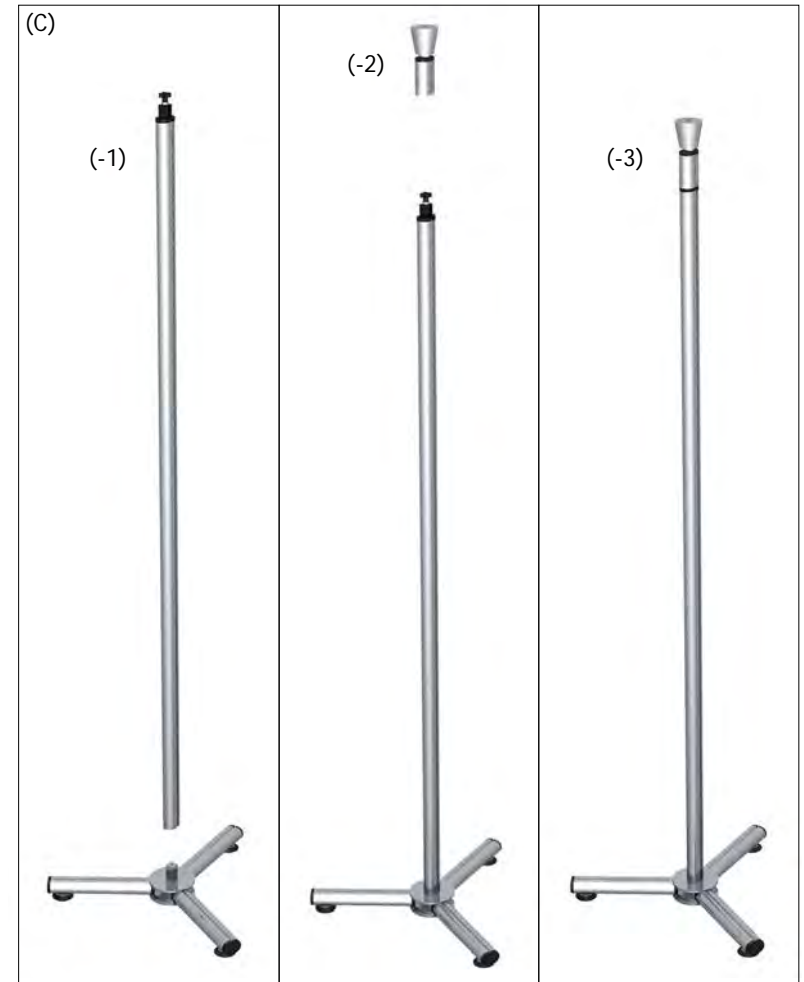
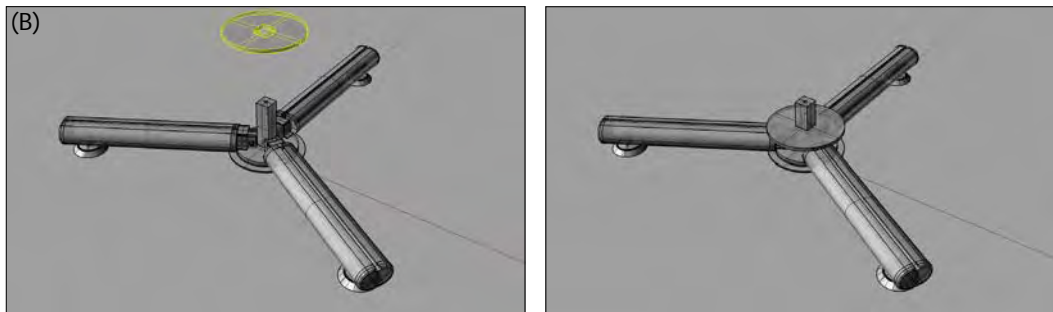
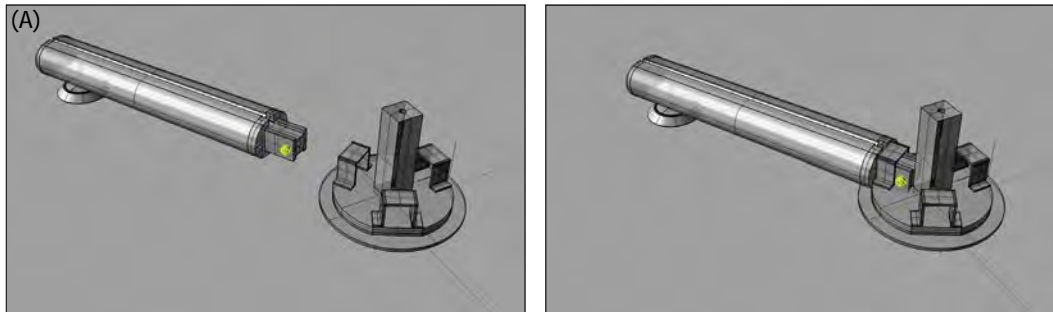
Visual Merchandising (Creo)

Applicable Products:

Bases (CRBP)

Base - Press down push button on base leg and insert into notch on tripod main base unit (fig. A). Repeat 3x. Slide cap over base unit (fig. B).

Upright - Align upright over base and tighten knob until base is secure (fig. C-1). Align cone over upright (fig. C-2) and tighten cone to secure unit (fig. C-3).



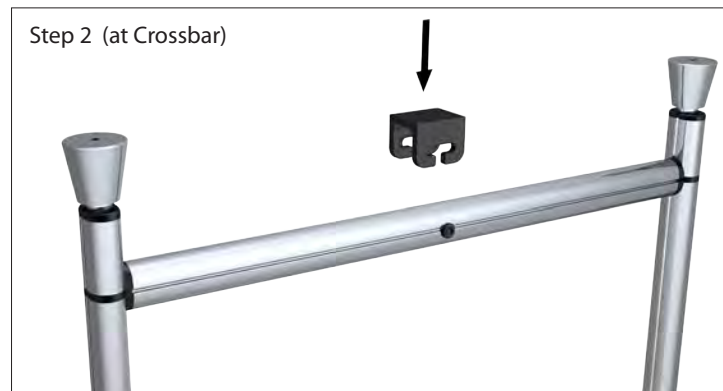
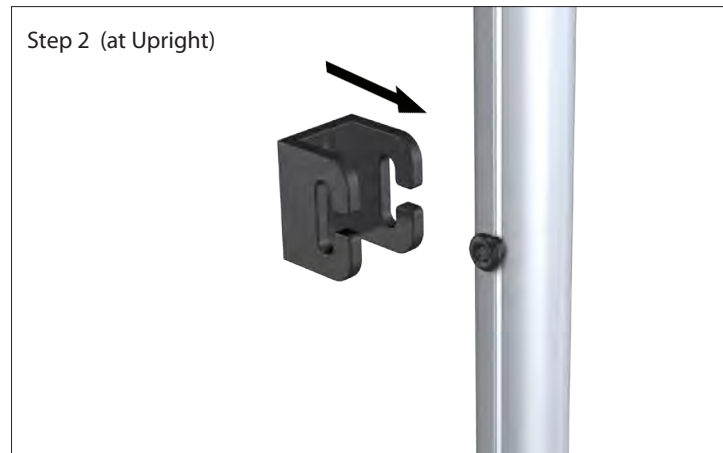
NOTE: CREO instruction sheets are meant to act as a reference guide to help you install your unit. In some cases, images shown in the instruction sheet will differ from your custom product. However, the installation concepts remain the same. End user will determine where additional components are placed. Please refer to additional CREO instruction sheets where applicable. Most importantly: **Always remember to work from the bottom up!**

Visual Merchandising (Creo™)

Applicable Products:

Saddle Bracket (CRSD)

1. Insert the glide screw/knob rest assembly into the channel of the crossbar or upright, then loosely tighten the knob to prevent it from slipping.
2. Slide the saddle bracket over the knob rest, then fully tighten the knob to firmly secure the saddle bracket position.



Visual Merchandising (Creo™)

Applicable Products:

Most Creo components use one of the following connectors/brackets to attach to the uprights and crossbars:

Connectors
Brackets

1. Determine which connector is used. Slide glide into channel intersection and temporarily tighten to secure (fig. A).
2. Determine which bracket is used (if applicable). Slide bracket over connector(s) and tighten connector(s) to secure (fig. B).
3. For Puck and Glide installation on a Crossbar, insert the glide screw into the channel of the crossbar before connecting the crossbar to the upright (fig. C).

fig A.



fig B.



fig C.

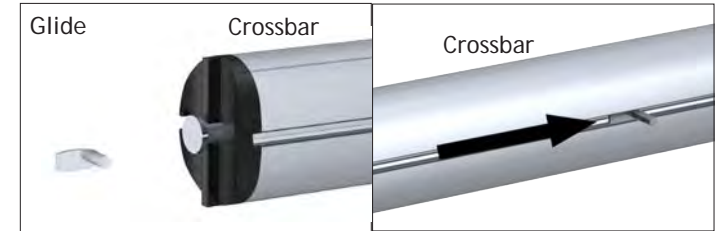
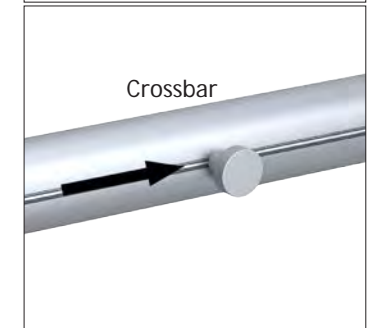
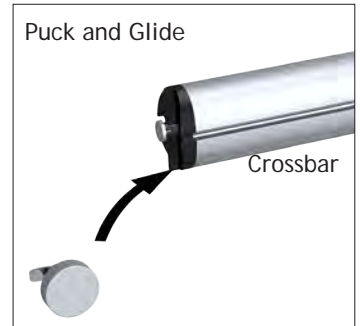
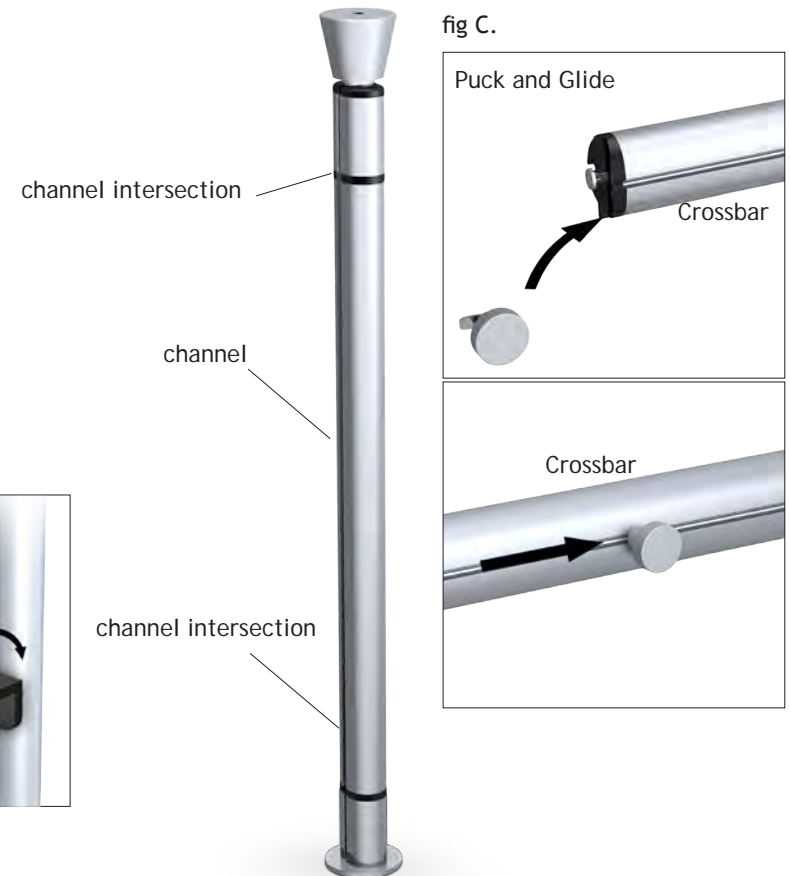


fig C.



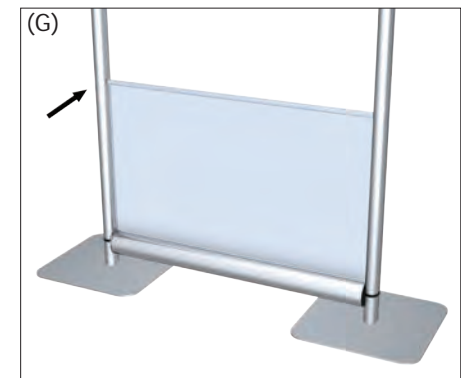
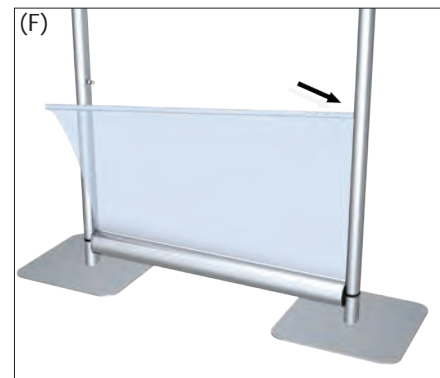
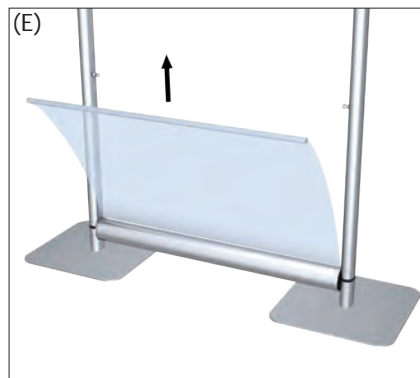
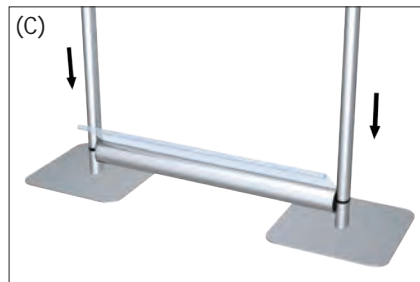
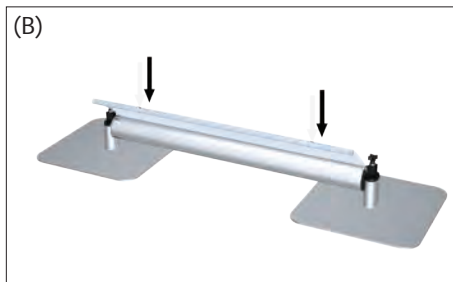
Visual Merchandising (Creo™)

Applicable Products:

Retractable Crossbars Bottom
(CRPC)

**NOTE: Most upright components must be installed before completing unit assembly.
End user determines component location.**

1. Press crossbar into base upright channels (Make sure crossbar is positioned as shown) (fig. A & B).
2. Slide uprights over base uprights and tighten upright knob to secure (fig. C).
3. Slide pocket arm glides into upright channels and tighten to secure (fig. D). Repeat 2x.
4. Pull graphic out of crossbar canister (fig. E) and insert unnotched end of pocket arm over pocket glide (fig. F).
5. Press notched end of pocket arm over opposite pocket arm glide to secure (fig. G).



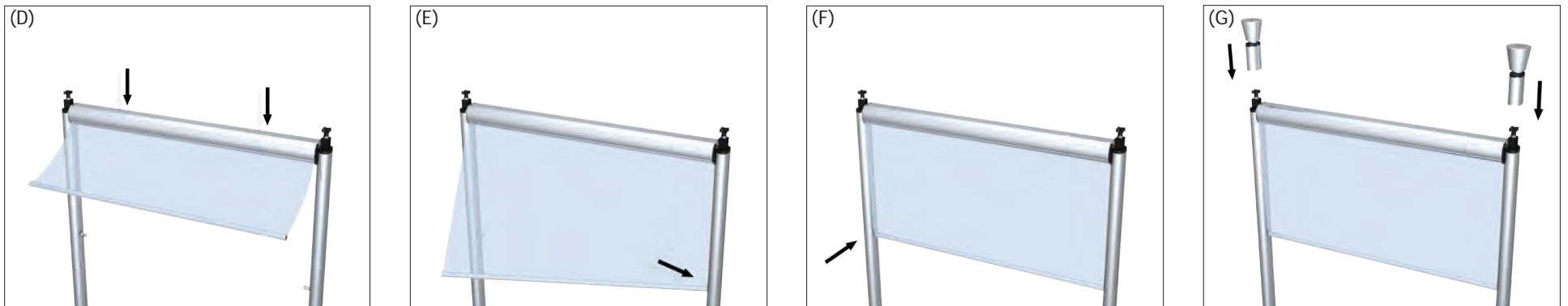
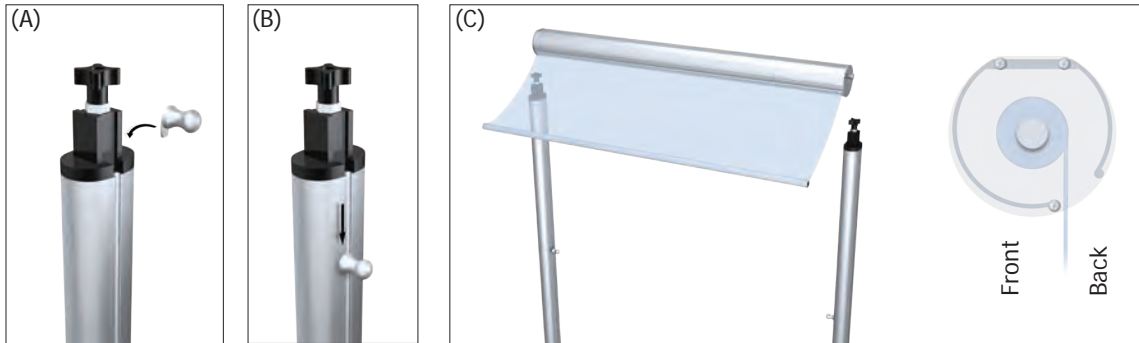
Visual Merchandising (Creo™)

Applicable Products:

Retractable Crossbars Top
(CRPC)

**NOTE: Most upright components must be installed before completing unit assembly.
End user determines component location.**

1. Slide pocket arm glides into upright channels (fig. A & B) and tighten to secure. Repeat 2x.
2. Press crossbar into upright channels (Make sure crossbar is positioned as shown) (fig. C & D).
3. Insert unnotched end of pocket arm over pocket glide (fig. E).
4. Press notched end of pocket arm over opposite pocket arm glide to secure (fig. F).
5. Slide cones over upright and tighten to secure (fig. G).

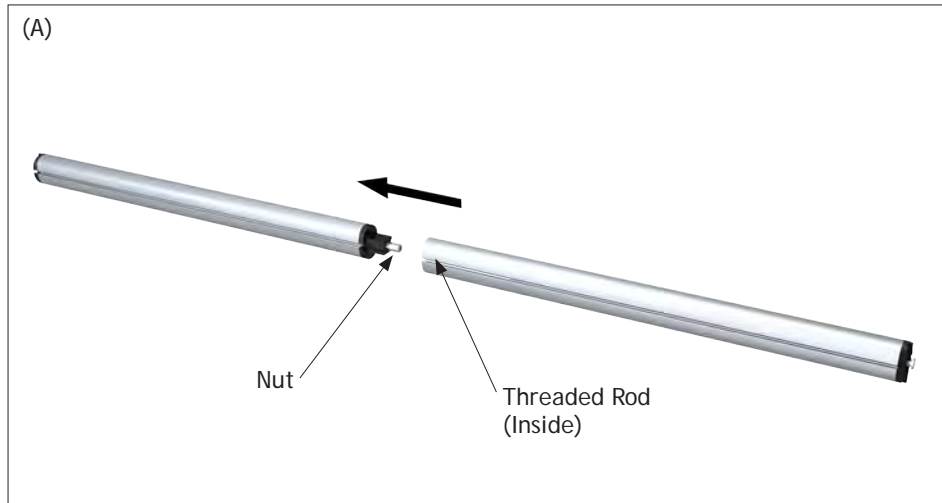


Visual Merchandising (Creo™)

Applicable Products:

Crossbar Two Section
(CRCB52S)

1. Slide one half of the crossbar over the other half to align the threaded rod with the nut (fig. A).
2. Tighten the button head of the crossbar using the hex key provided (fig. B).



Visual Merchandising (Creo™)

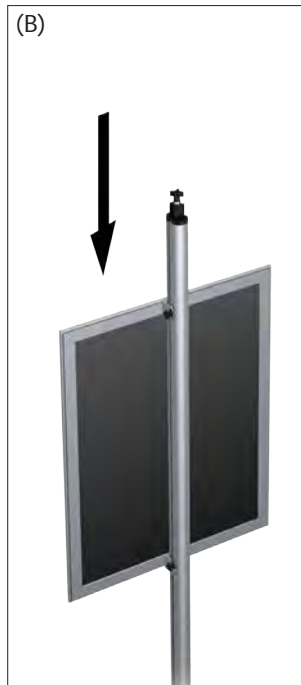
Applicable Products:

Frames (CRME-C)

**NOTE: Most upright components must be installed before completing unit assembly.
End user determines component location.**

1. Align knob rest glides with the upright channel (fig. A-1). Slide knob rest glides into upright channel and temporarily tighten (fig. A-2).
2. Hook frame brackets over knob rests and tighten knobs to secure frame in place (fig. B).
3. Repeat for opposite frame (fig. C).
4. Screw cone onto upright to complete unit installation (fig. D).

NOTE: Frame shown below may look different from your model, but assembly instructions remain the same.



Visual Merchandising (Creo™)

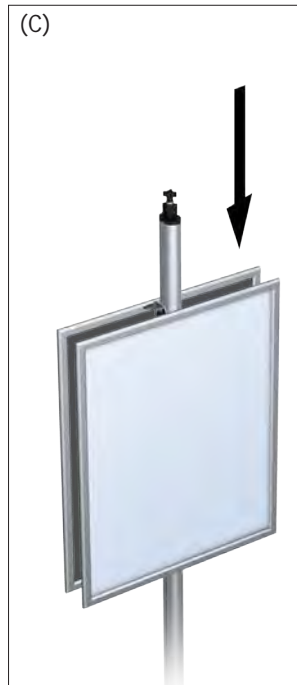
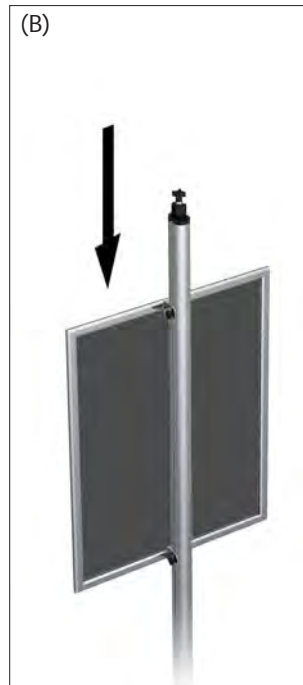
Applicable Products:

Frames (CRPX-C)

**NOTE: Most upright components must be installed before completing unit assembly.
End user determines component location.**

1. Align knob rest glides with the upright channel (fig. A-1). Slide knob rest glides into upright channel and temporarily tighten (fig. A-2).
2. Hook frame brackets over knob rests and tighten knobs to secure frame in place (fig. B).
3. Repeat for opposite frame (fig. C).
4. Screw cone onto upright to complete unit installation (fig. D).

NOTE: Frame shown below may look different from your model, but assembly instructions remain the same.



Visual Merchandising (Creo™)

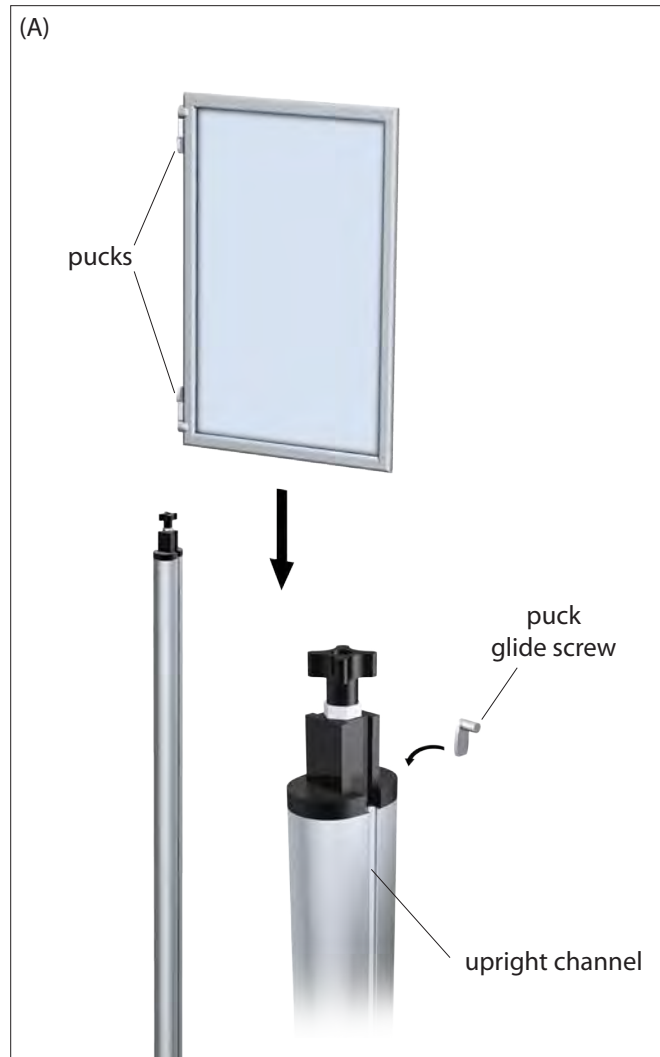
Applicable Products:

Frames (CRPX-D)

**NOTE: Most upright components must be installed before completing unit assembly.
End user determines component location.**

1. Slide puck glide screws down the upright channel (fig. A).
2. Tighten pucks to hold frame firmly in place (fig. B).

NOTE: Frame shown below may look different from your model, but assembly instructions remain the same.



Visual Merchandising (Creo)

**NOTE: Most upright components must be installed before completing unit assembly.
End user determines component location.**

- 1. Insert glides into upright channel (fig. A).
- 2. Tighten knobs onto glides to secure location of frame (fig. B)

Applicable Products:

- Swivel Frame
- CRSV0
- CRSV1
- CRSV2
- CRSV3



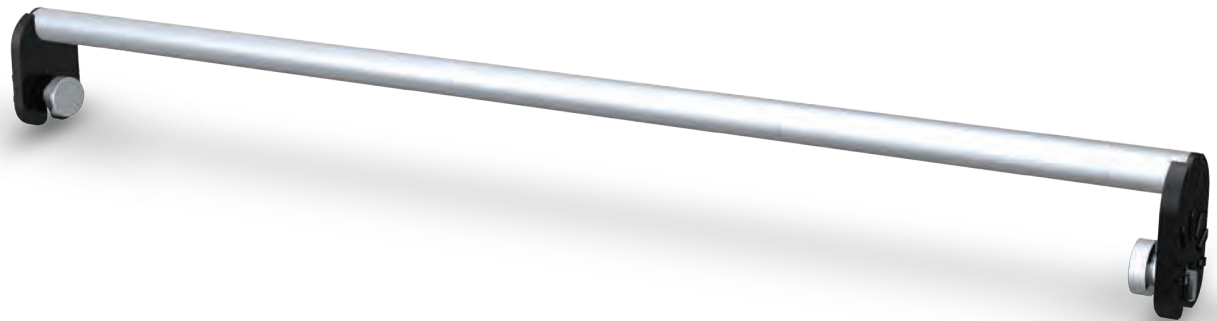
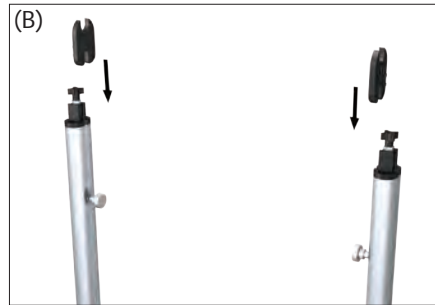
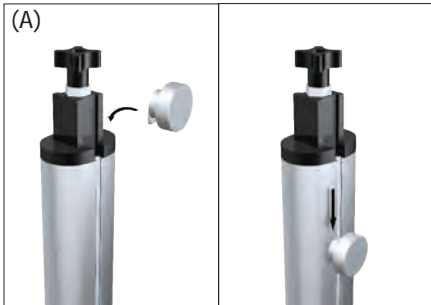
Visual Merchandising (Creo™)

Applicable Products:

Center Garment (CRCG)

**NOTE: Most upright components must be installed before completing unit assembly.
End user determines component location.**

1. Insert puck glides into upright channel. Slide pucks to desired location (fig. A).
2. Align brackets over pucks (fig. B & fig. C) and tighten to secure.
3. Rest garment pole over bracket notches to complete unit assembly (fig. D & E).



Visual Merchandising (Creo™)

Applicable Products:

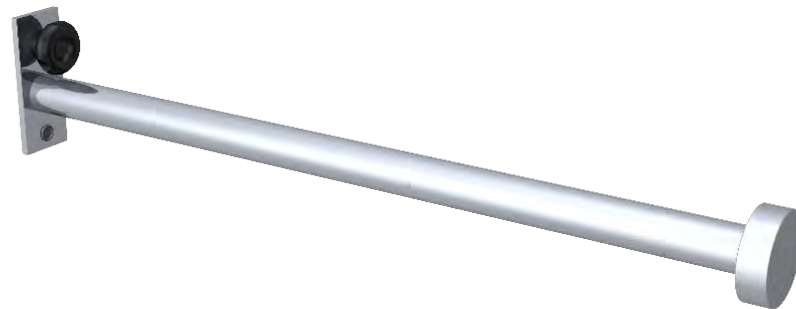
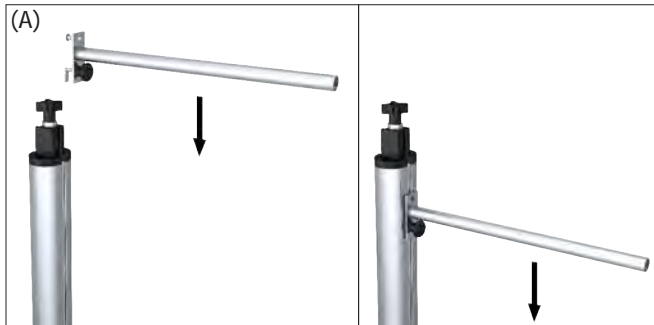
Costumer Arm (CRUM)

Bottom Arm - Slide knob rest glide and foot of bottom costumer arm bracket into upright channel. Move to desired location and tighten knob rest to secure (fig. A).

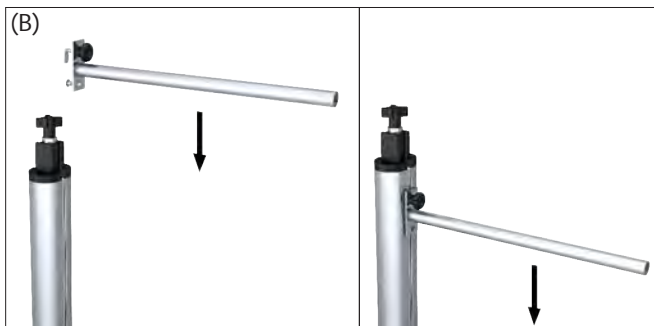
Top Arm - Slide knob rest glide and foot of top costumer arm bracket into upright channel. Move to desired location and tighten knob rest to secure (fig. B).

Graphic - Slide graphic over top and bottom costumer arms. Screw finishing pucks onto costumer arms to complete assembly (fig. C).

Bottom Arm (Note: Knob rest must be BELOW arm)



Top Arm (Note: Knob rest must be ABOVE arm)



NOTE: CREO instruction sheets are meant to act as a reference guide to help you install your unit. In some cases, images shown in the instruction sheet will differ from your custom product. However, the installation concepts remain the same. End user will determine where additional components are placed. Please refer to additional CREO instruction sheets where applicable. Most importantly: **Always remember to work from the bottom up!**

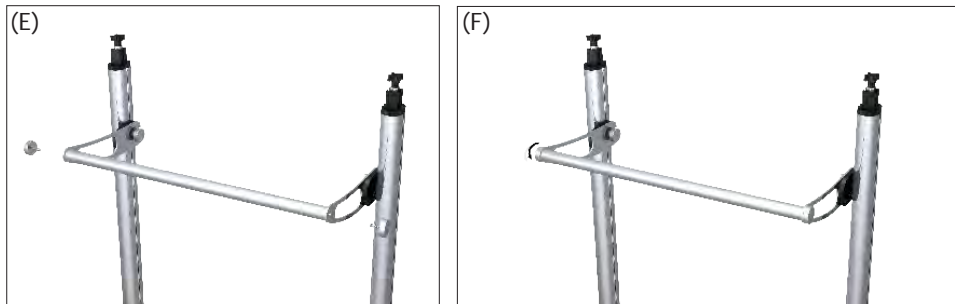
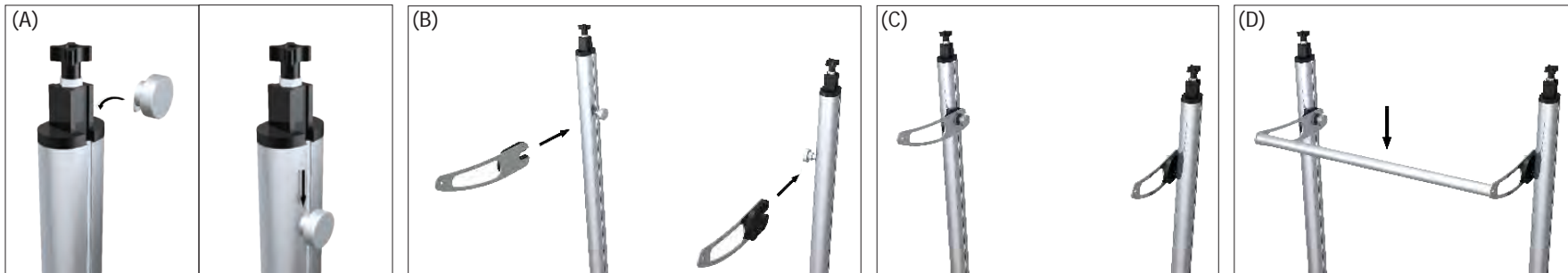
Visual Merchandising (Creo™)

Applicable Products:

Extended Garment - Single (CREGS)
Extended Garment - Double (CREGD)

**NOTE: Most upright components must be installed before completing unit assembly.
End user determines component location.**

1. Insert puck glides into upright channel. Slide pucks to desired location (fig. A).
2. Align brackets over pucks (fig. B & fig. C) and tighten to secure.
3. Align garment pole in between brackets (fig. D) and screw puck knobs onto bracket to secure pole (fig. E & F).



Extended Garment - Single (CREGS) shown

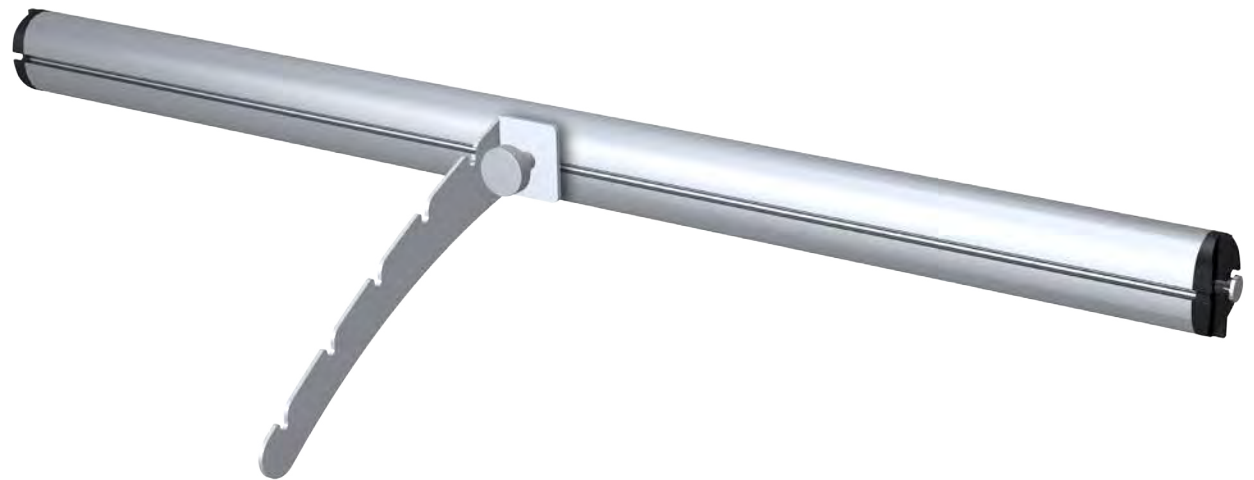
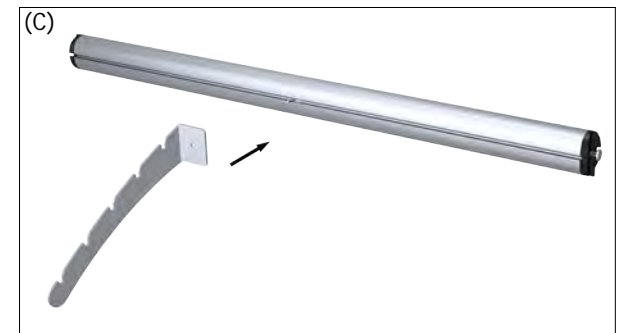
Visual Merchandising (Creo)

**NOTE: Most upright components must be installed before completing unit assembly.
End user determines component location.**

1. Insert puck glide into crossbar channel (fig. A).
2. Slide glide to desired location (fig. B).
3. Align hole on waterfall bracket with puck glide (fig. C).
4. Slide waterfall bracket over glide (fig. D).
5. Screw puck onto glide and tighten to secure (fig. E).

Applicable Products:

Waterfalls (CRWC5)
Waterfalls (CRWC7)



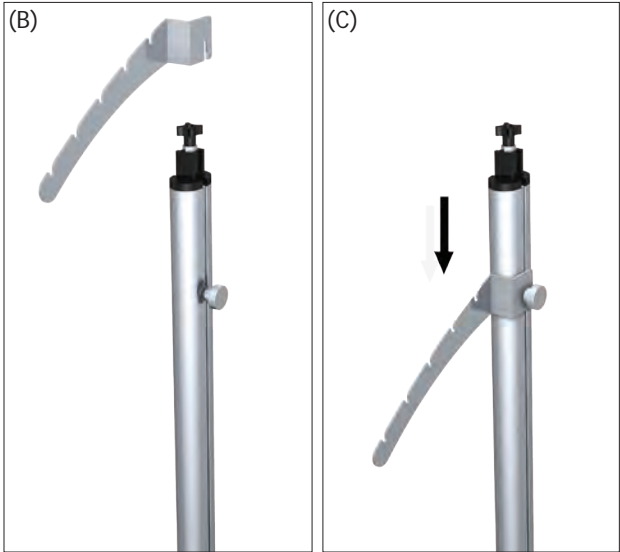
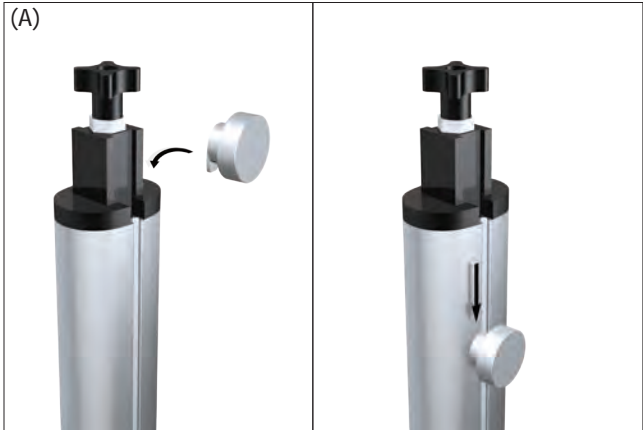
Visual Merchandising (Creo™)

Applicable Products:

Waterfalls (CRWF5)
Waterfalls (CRWF7)

**NOTE: Most upright components must be installed before completing unit assembly.
End user determines component location.**

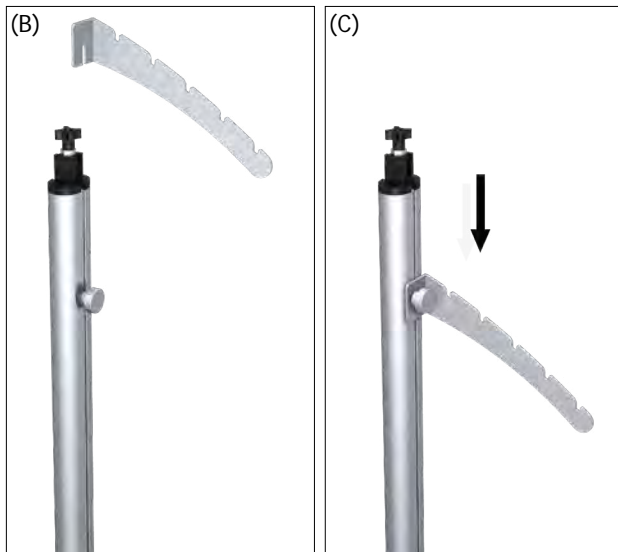
- 1. Insert puck glides into upright channel. Slide pucks to desired location (fig. A).
- 2. Align waterfall bracket with puck (fig. B).
- 3. Sandwich waterfall bracket in between upright and puck and tighten puck to secure (fig. C).



Visual Merchandising (Creo)

**NOTE: Most upright components must be installed before completing unit assembly.
End user determines component location.**

1. Insert puck glides into upright channel. Slide pucks to desired location (fig. A).
2. Align waterfall bracket with puck (fig. B).
3. Sandwich waterfall bracket in between upright and puck and tighten puck to secure (fig. C).



Applicable Products:

Waterfalls (CRWC5)
Waterfalls (CRWC7)



Visual Merchandising (Creo™)

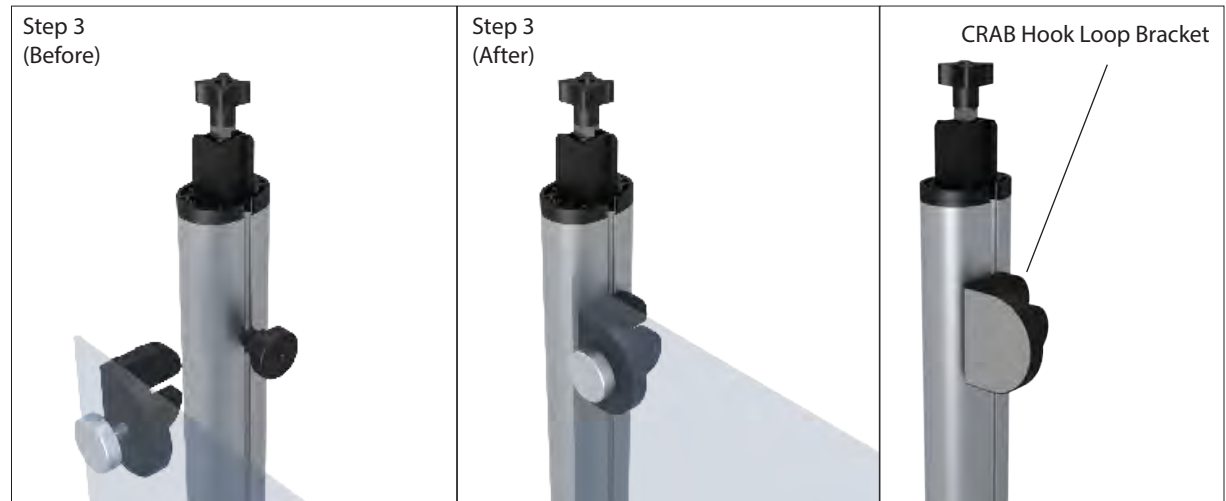
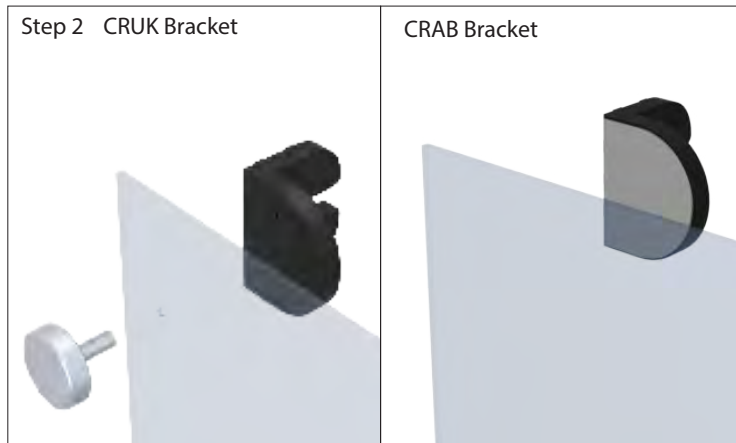
MAIN STRUCTURE ASSEMBLY INSTRUCTIONS
SEE ATTACHED PAGES FOR DETAILED INSTRUCTIONS

1. Insert Rest Puck and Glide into channel of Upright. Tighten slightly to temporarily secure position.
2. Fasten Graphic to Angle Backs using Plain Puck Screws or Hook and Loop surface.
3. Place Angle Backs over Rest Pucks and tighten Rest Puck to secure.



Applicable Products:

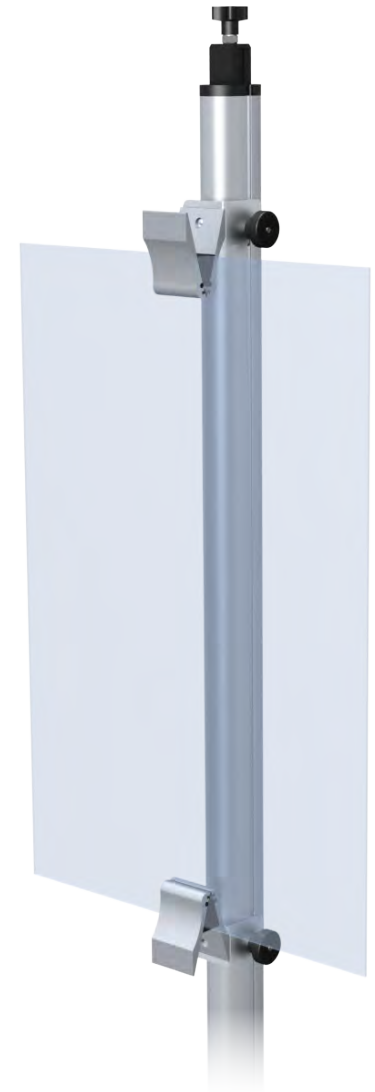
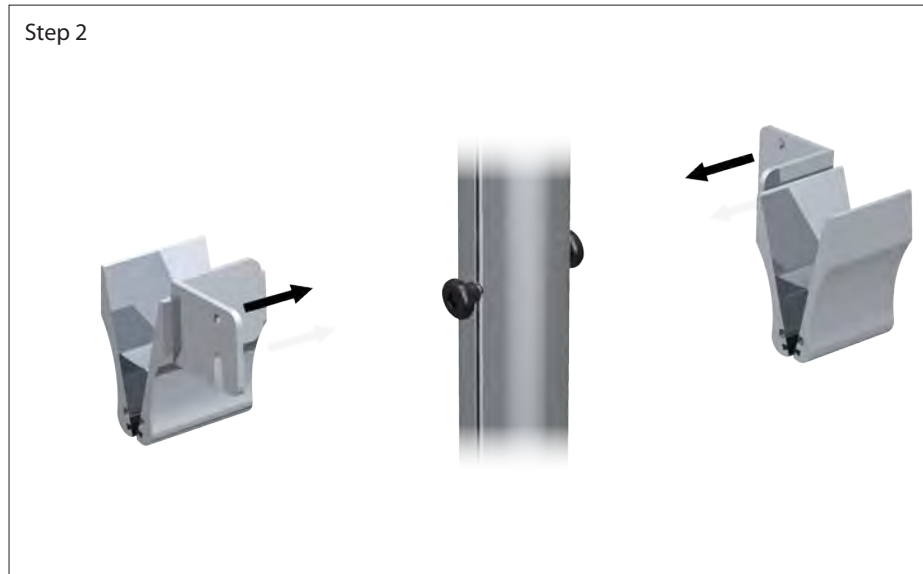
Angle Backs (CRUK)
Angle Backs (CRAB)



Visual Merchandising (Creo™)

1. Insert puck-glide into channel of upright.
2. Rest bracket of clamp onto upright and tighten puck to secure.
3. Insert graphic in between clamp(s), and adjust puck/clamp locations as needed.

NOTE: Model shown below may differ from your model. Although the number of upright sections may change, assembly instructions remain the same.



Two CRVM1's shown

Applicable Products:

Aluminum Clamp
CRVM1 (front facing)
CRVM2 (side facing)

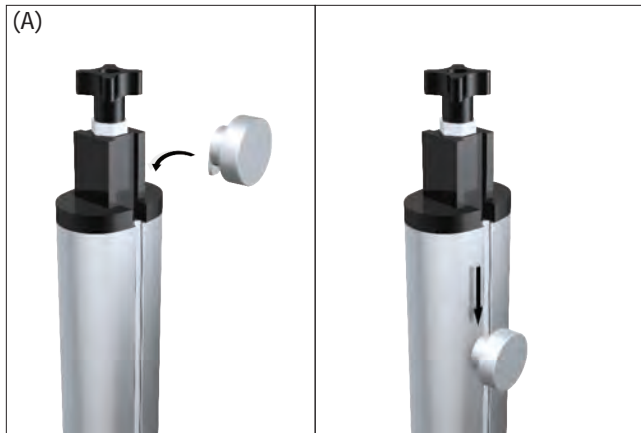
Visual Merchandising (Creo™)

Applicable Products:

Hook & Loop Bar (CRSB)

**NOTE: Most upright components must be installed before completing unit assembly.
End user determines component location.**

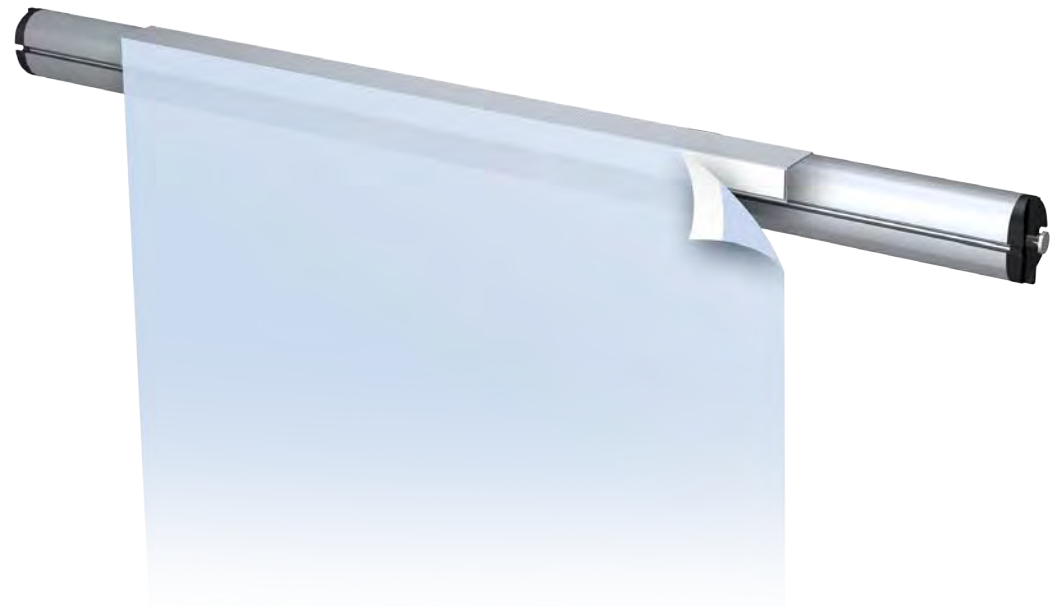
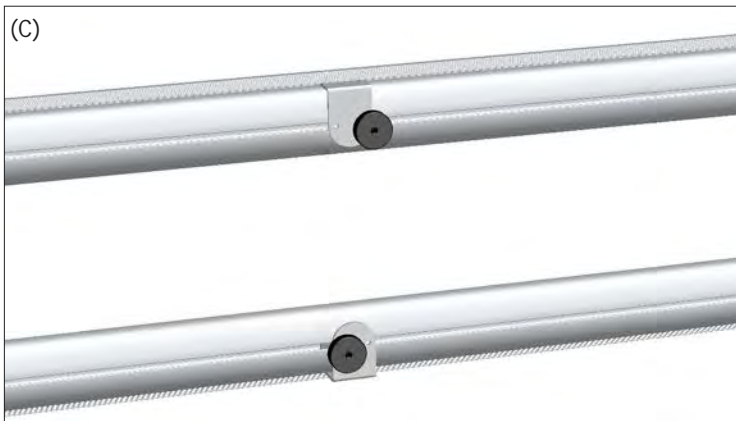
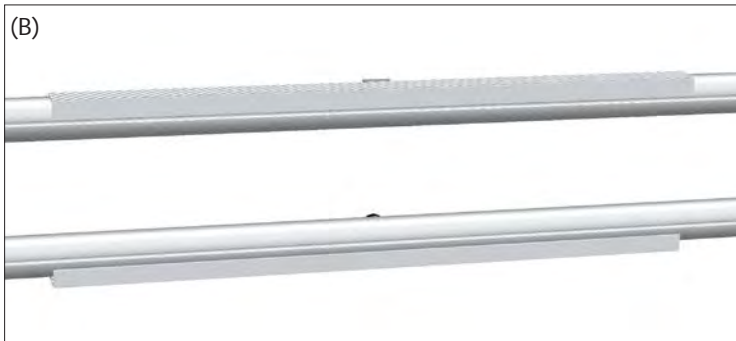
1. Insert puck glides into upright channel. Slide pucks to desired location (fig. A).
2. Align bar bracket with puck (fig. B).
3. Sandwich bar bracket in between upright and puck and tighten puck to secure (fig. C).
4. Attach graphic to hook & loop bar (fig. D).



Visual Merchandising (Creo)

**NOTE: Most upright components must be installed before completing unit assembly.
End user determines component location.**

1. Attach hook & loop bar to crossbar by inserting puck glide into crossbar channel. Slide pucks to desired location (fig. A).
2. Make sure that upper and lower hook & loop bars are aligned (fig. B).
3. Tighten puck to secure (fig. C)
4. Attach graphic to hook & loop bar (fig. D).



Applicable Products:

Hook & Loop Bar (CRAR-2)
Hook & Loop Bar (CRAR-3)
Hook & Loop Bar (CRAR-4)

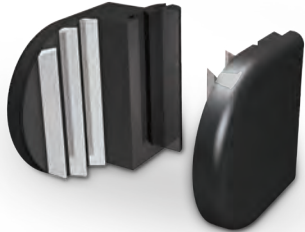
Visual Merchandising (Creo™)

Applicable Products:

Panel Grippers (CRPG)

**NOTE: Most upright components must be installed before completing unit assembly.
End user determines component location.**

- 1. Snap half-clip into channel (fig. A).
- 2. Insert graphic and interlock second half to secure (fig. B & C).



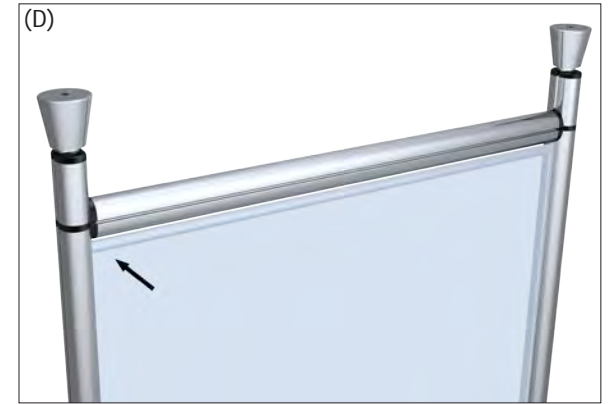
Visual Merchandising (Creo™)

Applicable Products:

Pocket Arms (CRPA)

**NOTE: Most upright components must be installed before completing unit assembly.
End user determines component location.**

1. Slide pocket arm glide into upright channel (fig. A & B) and tighten to secure.
2. Slide graphic over pocket arm. Insert unnotched end of pocket arm over pocket glide (fig. C).
3. Press notched end of pocket arm over opposite pocket arm glide to secure (fig. D).



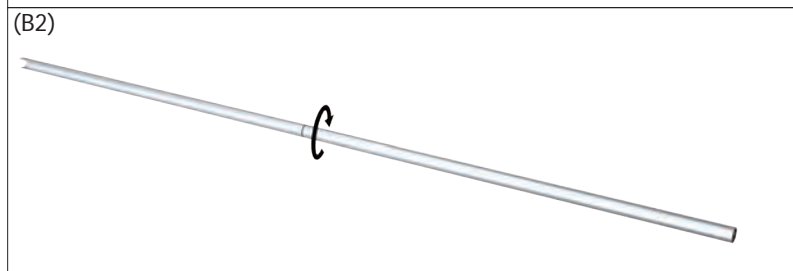
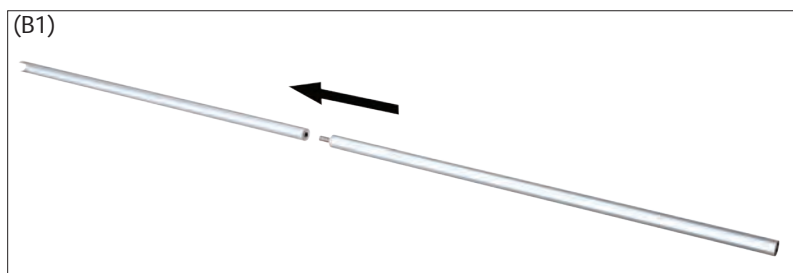
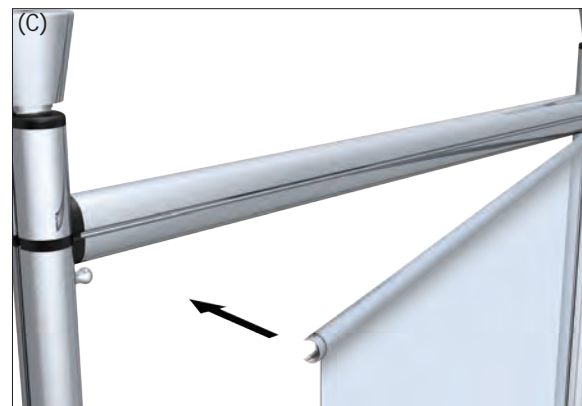
Visual Merchandising (Creo™)

Applicable Products:

Pocket Arm Two Section
(CPRA)

**NOTE: Most upright components must be installed before completing unit assembly.
End user determines component location.**

1. Slide pocket arm glide into upright channel (fig. A & B) and tighten to secure.
2. Slide graphic over pocket arm. Insert unnotched end of pocket arm over pocket glide (fig. C).
3. Press notched end of pocket arm over opposite pocket arm glide to secure (fig. C & D).



Visual Merchandising (Creo™)

Applicable Products:

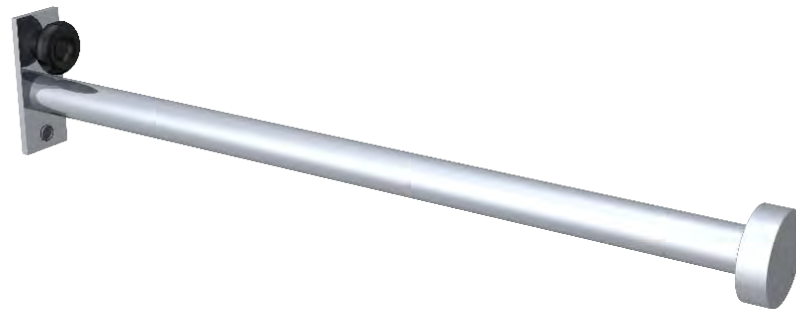
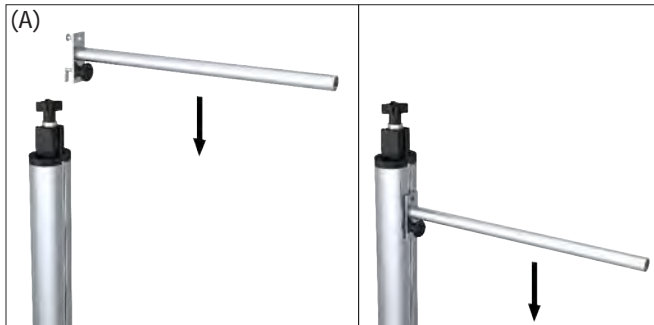
Graphic Rods (CRGR)

Bottom Arm - Slide knob rest glide and foot of bottom customer arm bracket into upright channel. Move to desired location and tighten knob rest to secure (fig. A).

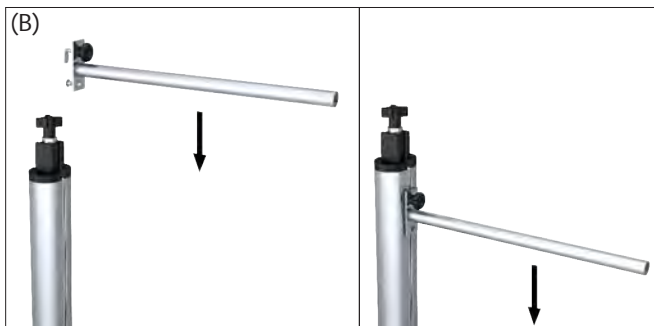
Top Arm - Slide knob rest glide and foot of top customer arm bracket into upright channel. Move to desired location and tighten knob rest to secure (fig. B).

Graphic - Slide graphic over top and bottom customer arms. Screw finishing pucks onto customer arms to complete assembly (fig. C).

Bottom Arm (Note: Knob rest must be BELOW arm)



Top Arm (Note: Knob rest must be ABOVE arm)



NOTE: CREO instruction sheets are meant to act as a reference guide to help you install your unit. In some cases, images shown in the instruction sheet will differ from your custom product. However, the installation concepts remain the same. End user will determine where additional components are placed. Please refer to additional CREO instruction sheets where applicable. Most importantly: **Always remember to work from the bottom up!**

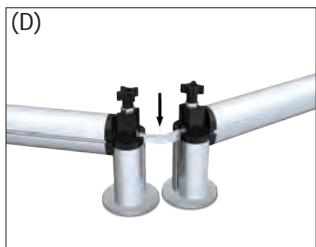
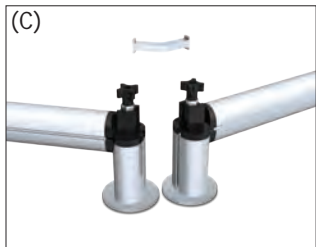
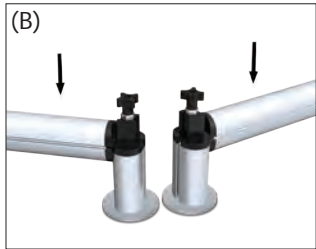
Visual Merchandising (Creo™)

Applicable Products:

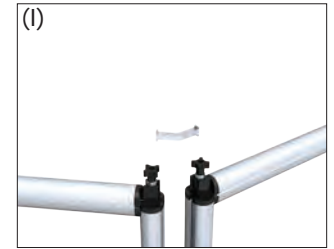
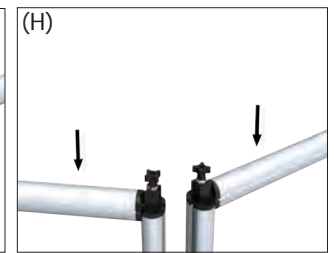
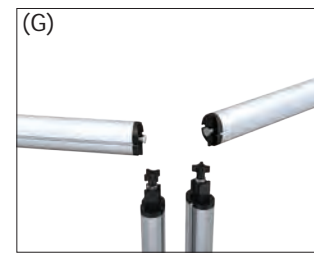
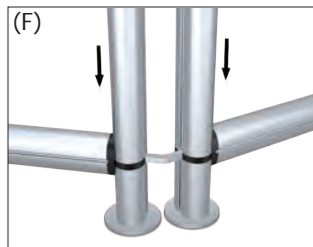
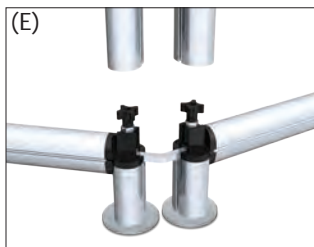
Joiner (CRC5)
Joiner (CRC6)
Joiner (CRC9)
Joiner (CRCA)

**NOTE: Most upright components must be installed before completing unit assembly.
End user determines component location.**

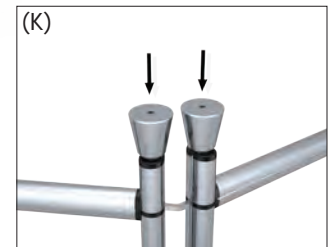
- BASE**
1. Press crossbars into base upright channels (fig. A & fig. B).
 2. Press joiner into base upright channel (fig. C & fig. D).
 3. Slide uprights over base uprights and tighten upright knob to secure (fig. E & fig. F).
- TOP**
1. Press crossbars into upright channels (fig. G & fig. H).
 2. Press joiner into upright channel (fig. I & fig. J).
 3. Slide cone over upright and screw cone onto upright to secure unit (fig. K & fig. L).



Base



Top



Visual Merchandising (Creo™)

Applicable Products:

Lights (CRLED18)

Lights (CR150)

Lights (CR200)

Lights (LEDCR - Cascade)

**NOTE: Most upright components must be installed before completing unit assembly.
End user determines component location.**

1. Insert knob rest glide into crossbar channel (fig. A).
2. Slide knob rest to desired location (fig. B).
3. Mount light onto crossbar (fig. C).
4. Tighten knob to secure (fig. D).



Visual Merchandising (Creo™)

Applicable Products:

Literature Holder (CRCH)

**NOTE: Most upright components must be installed before completing unit assembly.
End user determines component location.**

- 1. Slide glide puck down Creo upright (fig A).
- 2. Hang catalog holder bracket on glide puck at desired angle and tighten glide puck to secure (fig. B).



Visual Merchandising (Creo™)

Applicable Products:

Pamphlet Holder (CRPH)

**NOTE: Most upright components must be installed before completing unit assembly.
End user determines component location.**

1. Slide glide screw down Creo upright. Place the bracket anywhere vertically along upright channel and tighten knob rest to secure (fig. A).



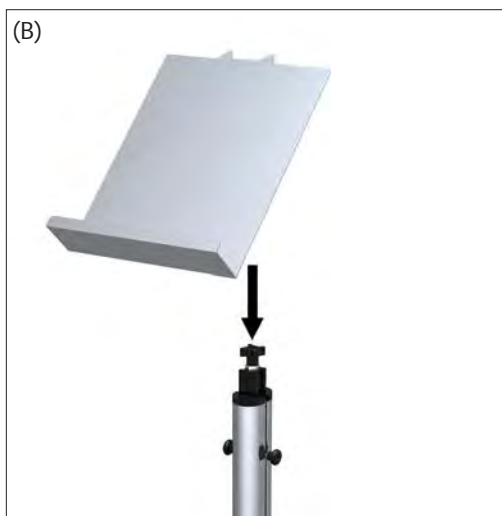
Visual Merchandising (Creo™)

Applicable Products:

Literature Holder (CRLF)

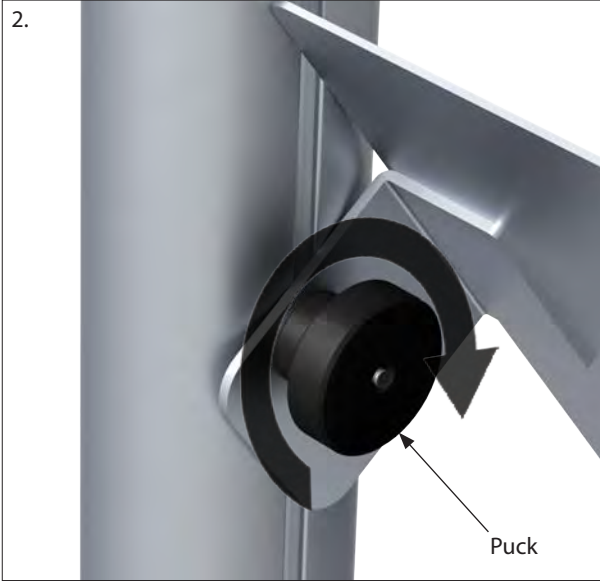
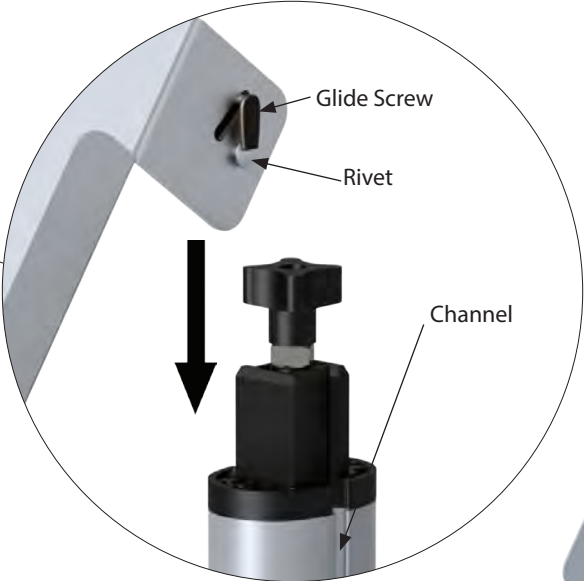
**NOTE: Most upright components must be installed before completing unit assembly.
End user determines component location.**

1. Insert knob rest into upright channel. Slide knob rest to desired location (fig. A).
2. Slide literature holder bracket onto upright and tighten knob rests to secure (fig. B).



Steel Holder Side - CRLS (Creo™)

- 1. Align glide screw and rivet with channel of upright, then slide into place. Glide screw and rivet both go into the channel.
- 2. Tighten puck to secure position.



Visual Merchandising (Creo)

**NOTE: Most upright components must be installed before completing unit assembly.
End user determines component location.**

1. Slide Glide Screw down Creo upright. Place the bracket anywhere vertically and tighten Knob Rest to secure (fig. A).

Applicable Products:

Mirror (CRAM)



(A)



Visual Merchandising (Creo™)

Applicable Products:

Pegboard

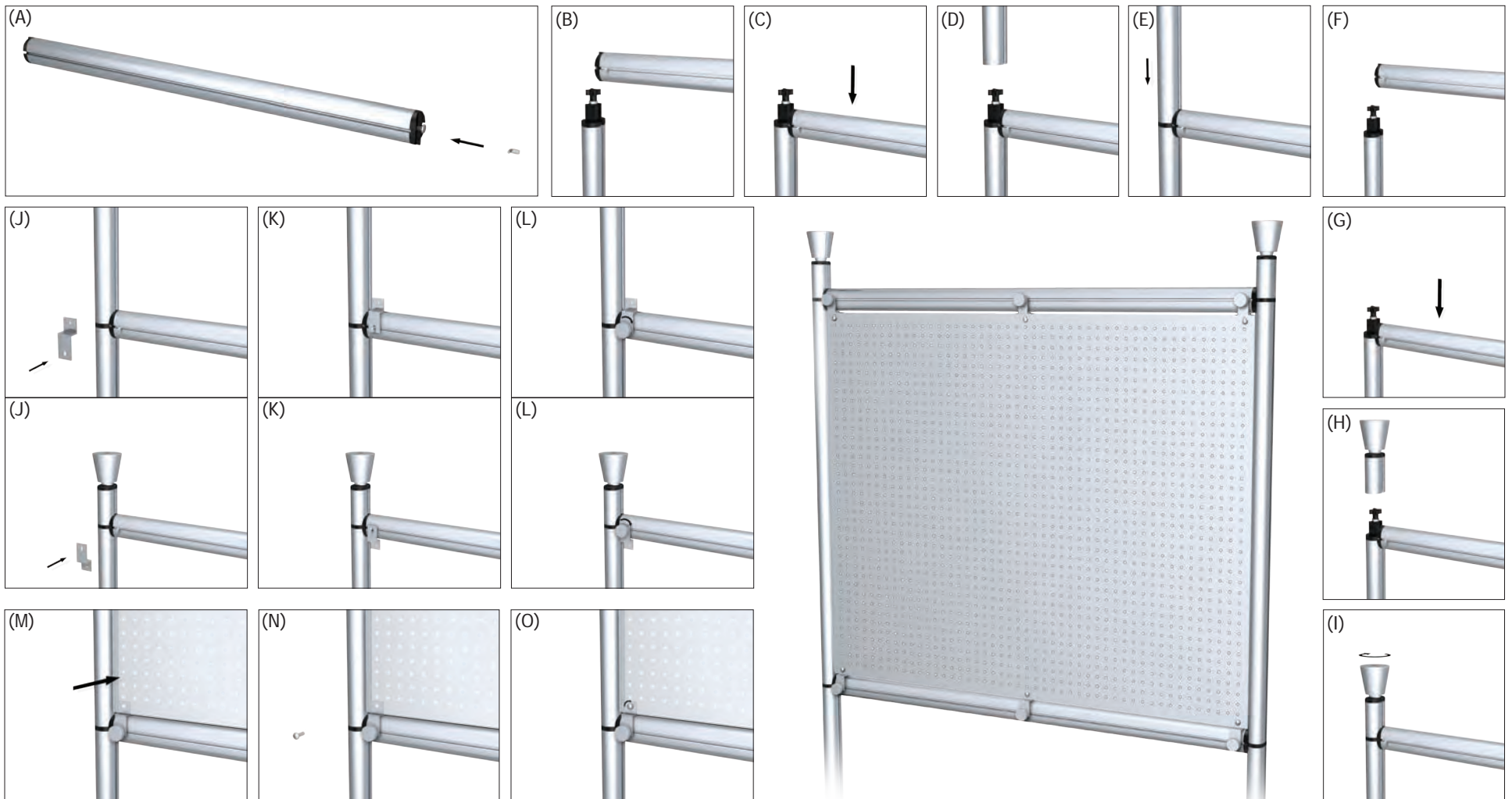
**NOTE: Most upright components must be installed before completing unit assembly.
End user determines component location.**

Creo Frame

1. Slide puck glide into crossbar channel (fig. A). **Repeat 6x** (3 glides per crossbar).
2. Press bottom crossbar into upright channel (fig. B & C). Slide second upright over the first and tighten knob to secure (fig. D & E).
3. Press top crossbar into upright channel (fig. F & G). Screw cone over upright to secure unit (fig. H & I).

Pegboard

1. Align pegboard brackets over puck glides (fig. J & K) and screw puck onto glide to secure bracket (fig. L). **Repeat 6x**.
2. Align pegboard holes with bracket holes (fig. M). Screw pegboard onto brackets to secure unit (fig. N & O).



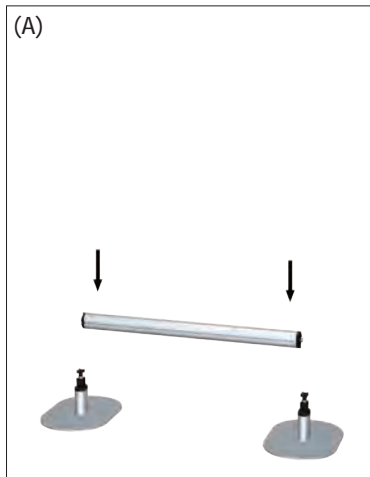
Visual Merchandising (Creo™)

Applicable Products:

Podium (CRPK1-PA)

**NOTE: Most upright components must be installed before completing unit assembly.
End user determines component location.**

1. Press bottom shelf crossbar into base upright channel (fig. A).
2. Slide uprights over base uprights and tighten knob, using cone top as a tightening tool (fig. B).
3. For pocket arm assembly, please see **Pocket Arms (CRPA) Instruction Sheet**.
4. Press top shelf crossbar into upright channel (fig. C).
5. Slide cone over upright and tighten cone to secure (fig. D).
6. Align shelf with cone holes (fig. E) and screw pucks over shelf to secure unit (fig. F).



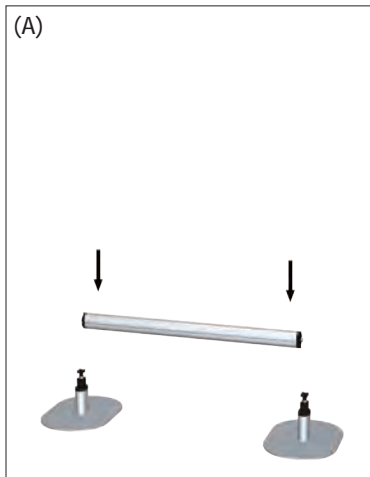
Visual Merchandising (Creo™)

Applicable Products:

Podium (CRPK1-PG)

**NOTE: Most upright components must be installed before completing unit assembly.
End user determines component location.**

1. Press bottom shelf crossbar into base upright channel (fig. A).
2. Slide uprights over base uprights and tighten knob, using cone top as a tightening tool (fig. B).
3. For panel gripper assembly, please see **Panel Grippers (CRPG) Instruction Sheet**.
4. Press top shelf crossbar into upright channel (fig. C).
5. Slide cone over upright and tighten cone to secure (fig. D).
6. Align shelf with cone holes (fig. E) and screw pucks over shelf to secure unit (fig. F).



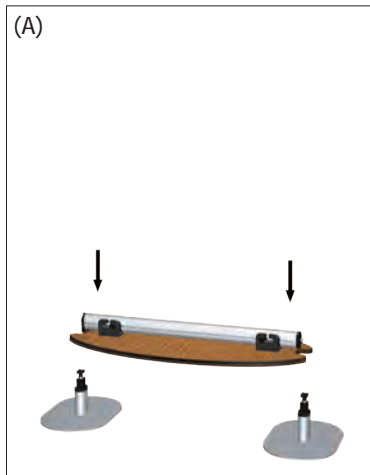
Visual Merchandising (Creo™)

Applicable Products:

Podium (CRPK2)

**NOTE: Most upright components must be installed before completing unit assembly.
End user determines component location.**

1. Press bottom shelf crossbar into base upright channel (fig. A).
2. Slide uprights over base uprights and tighten knob, using cone top as a tightening tool (fig. B).
3. Press top shelf crossbar into upright channel (fig. C).
4. Slide cone over upright and tighten cone to secure (fig. D).
5. Align shelf with cone holes (fig. E) and screw pucks over shelf to secure unit (fig. F).
6. Wrap hook and loop graphic around podium.



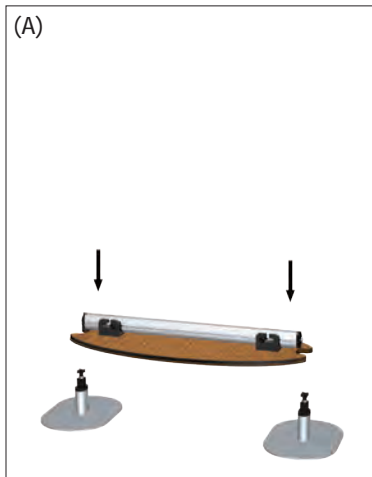
Visual Merchandising (Creo™)

Applicable Products:

Podium (CRPK3)

**NOTE: Most upright components must be installed before completing unit assembly.
End user determines component location.**

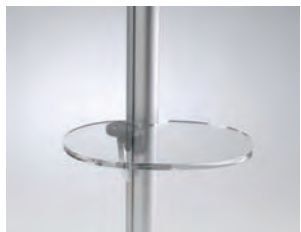
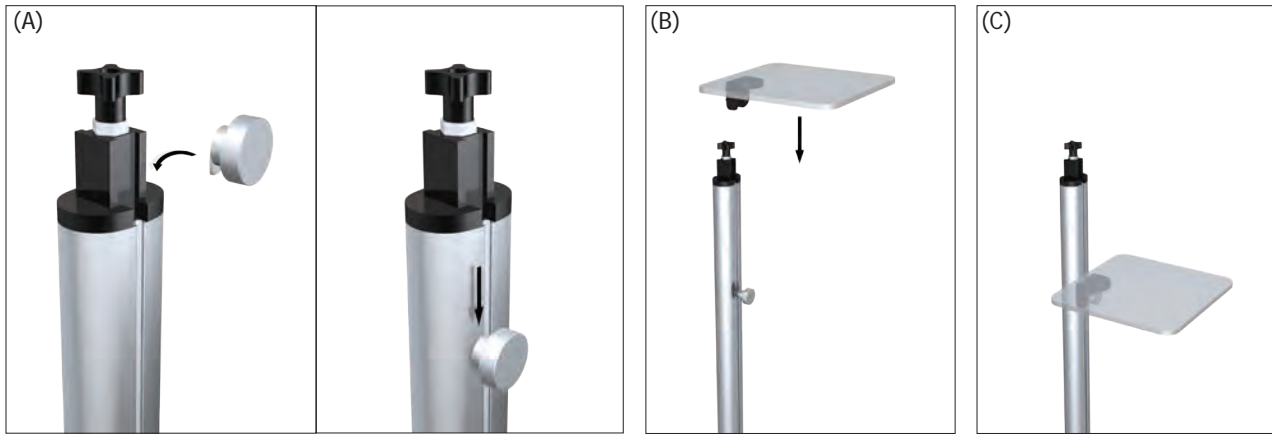
1. Press bottom shelf crossbar into base upright channel (fig. A).
2. Slide uprights over base uprights and tighten knob, using cone top as a tightening tool (fig. B).
3. Press top shelf crossbar into upright channel (fig. C).
4. Slide cone over upright and tighten cone to secure (fig. D).
5. Wrap hook and loop graphic around podium.



Visual Merchandising (Creo™)

**NOTE: Most upright components must be installed before completing unit assembly.
End user determines component location.**

1. Insert puck glides into upright channel. Slide pucks to temporary location (fig. A).
2. Align shelf bracket with puck (fig. B).
3. Sandwich bracket in between upright and puck and tighten puck to secure (fig. C).



CROS



CRRS



CRSF



CRSS



Applicable Products:

- Oval Shelf (CROS-S)
- Round Shelf (CRRS-S)
- Shoe Shelf (CRSF-S)
- Square Shelf (CRSS-S)

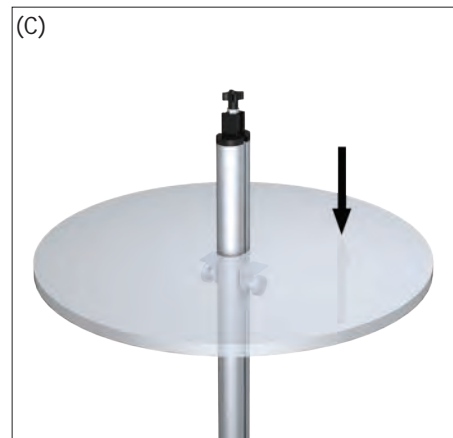
Visual Merchandising (Creo™)

Applicable Products:

Round Shelf (CRRM)
Round Shelf (CRRP)

**NOTE: Most upright components must be installed before completing unit assembly.
End user determines component location.**

1. Insert puck glides into channel on both sides of the upright. Slide pucks to desired location (fig. A).
2. Align shelf bracket with pucks (fig. B).
3. Sandwich shelf brackets in between upright and pucks and tighten pucks to secure (fig. C).



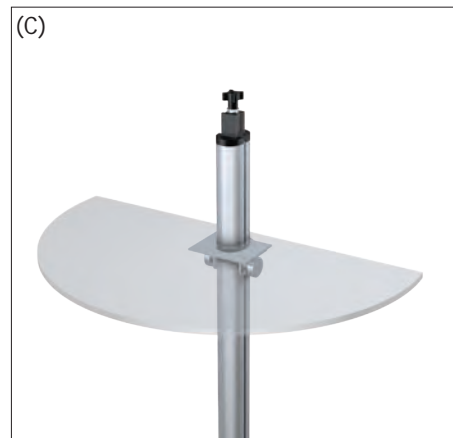
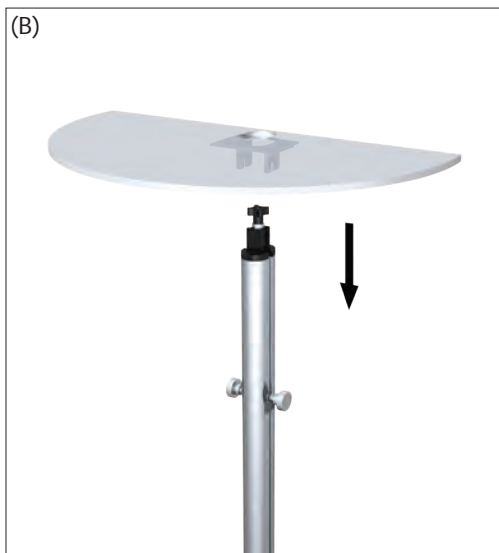
Visual Merchandising (Creo™)

Applicable Products:

Half-Round Shelf (CRHM)
Half-Round Shelf (CRHP)

**NOTE: Most upright components must be installed before completing unit assembly.
End user determines component location.**

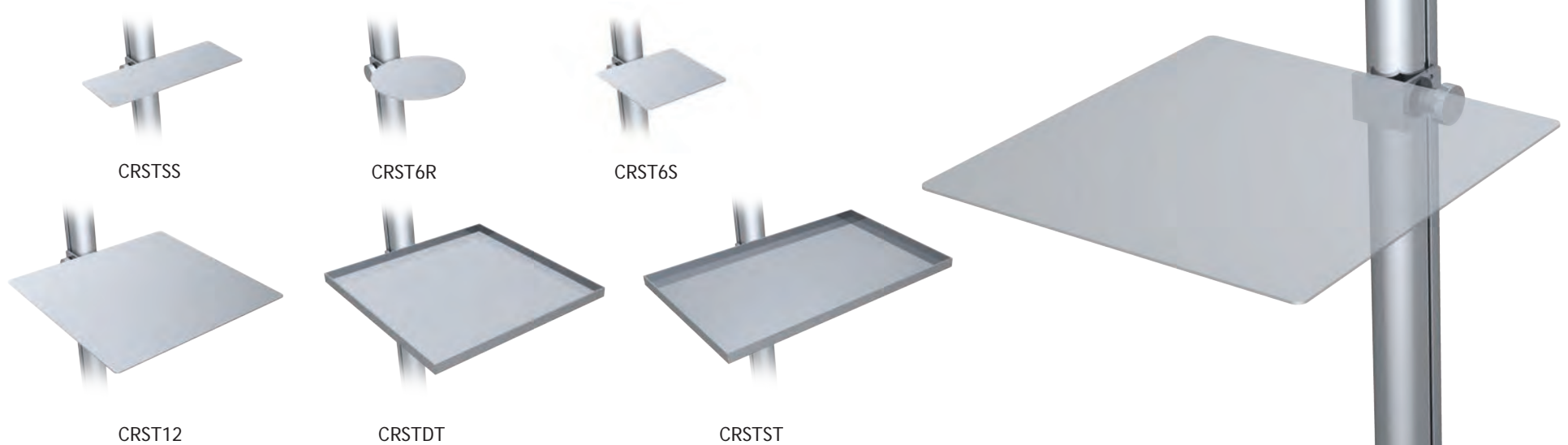
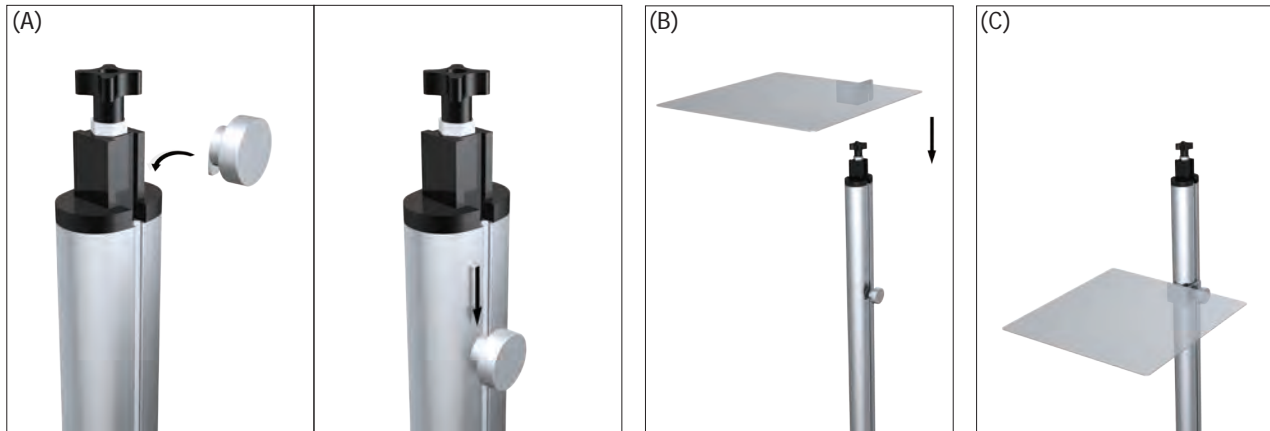
1. Insert puck glides into channel on both sides of the upright. Slide pucks to desired location (fig. A).
2. Align shelf bracket with pucks (fig. B).
3. Sandwich shelf brackets in between upright and pucks and tighten pucks to secure (fig. C).



Visual Merchandising (Creo™)

**NOTE: Most upright components must be installed before completing unit assembly.
End user determines component location.**

1. Insert puck glides into upright channel. Slide pucks to temporary location (fig. A).
2. Align shelf bracket with puck (fig. B).
3. Sandwich bracket in between upright and puck and tighten puck to secure (fig. C).



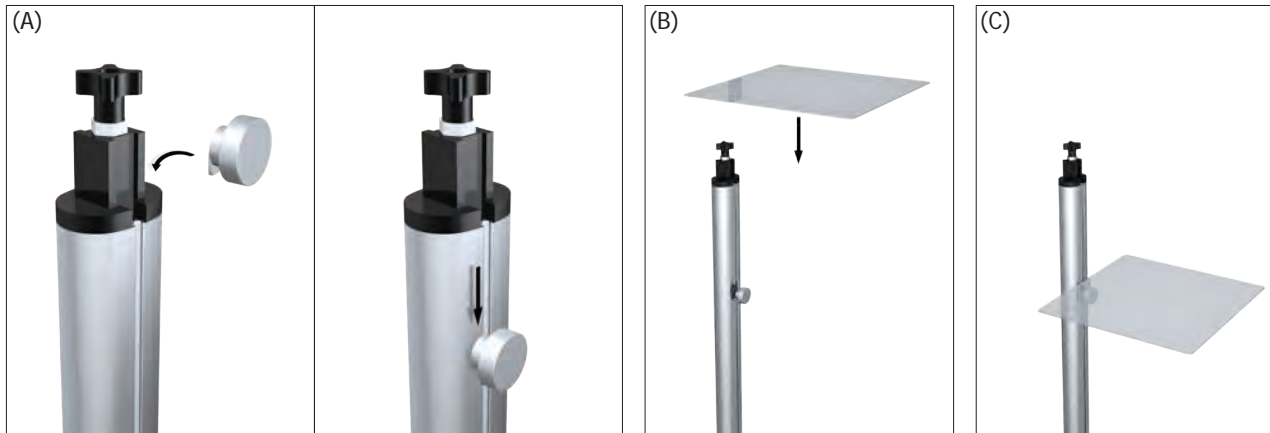
Applicable Products:

Shoe Shelf (CRSTSS)
6" Round Shelf (CRST6R)
6" Square Shelf (CRST6S)
12" Square Shelf (CRST12)
12" Square Tray (CRSTDT)
Shirt Tray (CRSTST)

Visual Merchandising (Creo)

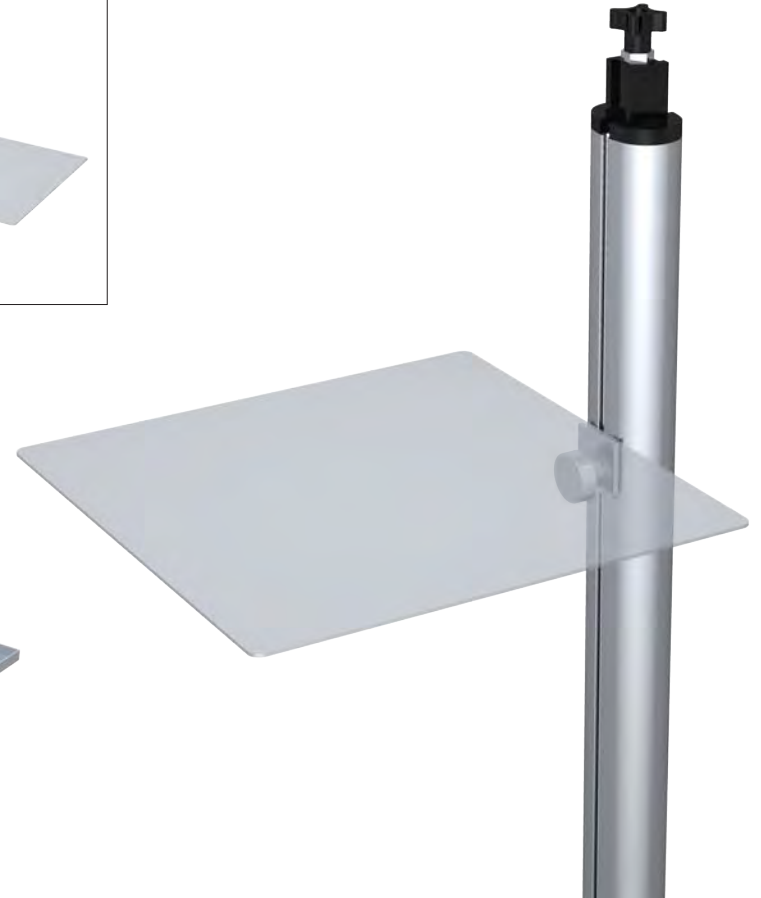
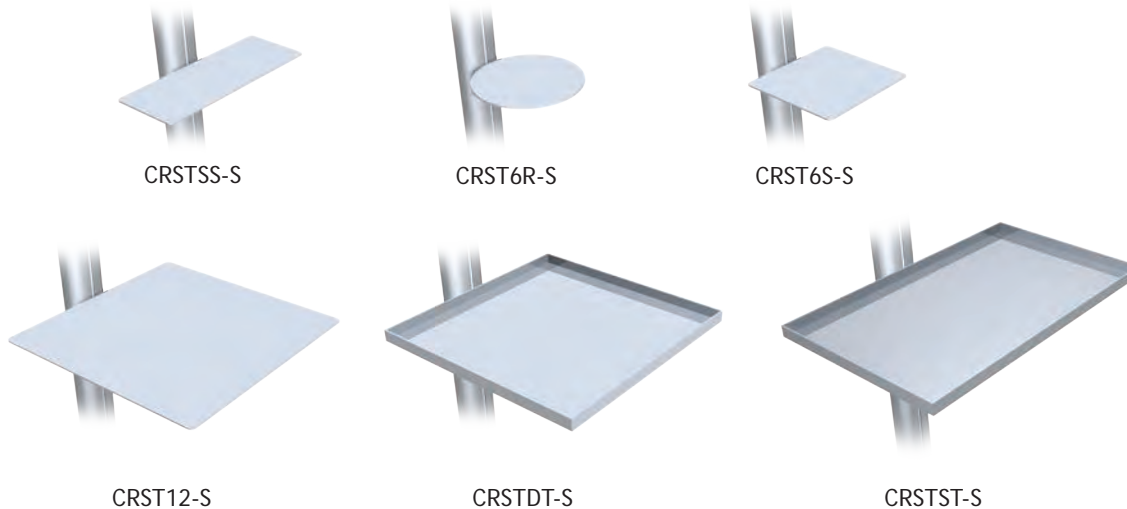
**NOTE: Most upright components must be installed before completing unit assembly.
End user determines component location.**

1. Insert puck glides into upright channel. Slide pucks to temporary location (fig. A).
2. Align shelf bracket with puck (fig. B).
3. Sandwich bracket in between upright and puck and tighten puck to secure (fig. C).



Applicable Products:

Shoe Shelf (CRSTSS-S)
6" Round Shelf (CRST6R-S)
6" Square Shelf (CRST6S-S)
12" Square Shelf (CRST12-S)
12" Square Tray (CRSTDT-S)
Shirt Tray (CRSTST-S)



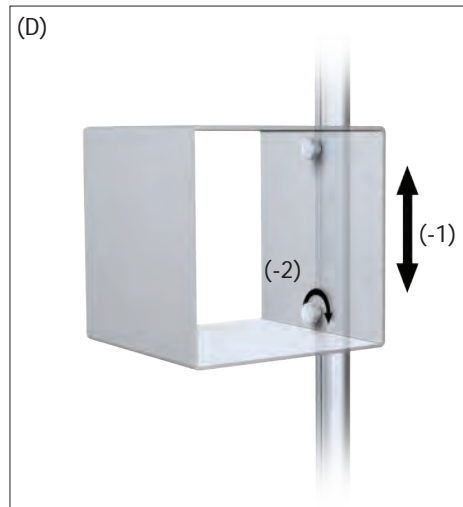
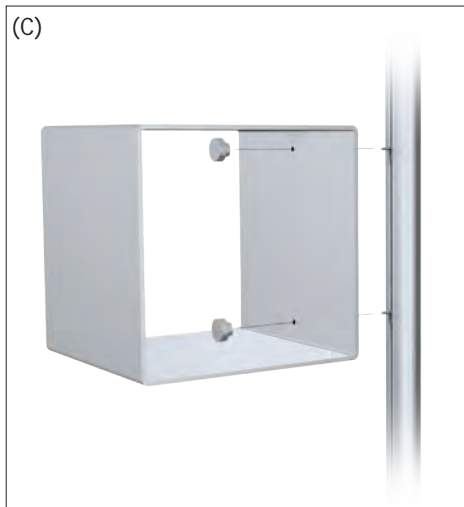
Visual Merchandising (Creo™)

Applicable Products:

Frosted Shelf (CRFS)

**NOTE: Most upright components must be installed before completing unit assembly.
End user determines component location.**

1. Insert puck glides into upright channel (fig. A & B).
2. Align puck glides with the two holes on the frosted shelf (fig. C).
3. Screw pucks loosely onto glides. Determine final location for the frosted shelf (fig. D-1) and tighten pucks to secure shelf (fig. D-2).



Visual Merchandising (Creo™)

Applicable Products:

Inclinable Shelf (CRIS)

**NOTE: Most upright components must be installed before completing unit assembly.
End user determines component location.**

1. Insert puck glides loosely into upright channel. Slide pucks to desired location (fig. A).
2. Align shelf brackets over pucks (fig. B & fig. C).
3. Determine mounting position and tighten pucks to secure unit (fig. D).



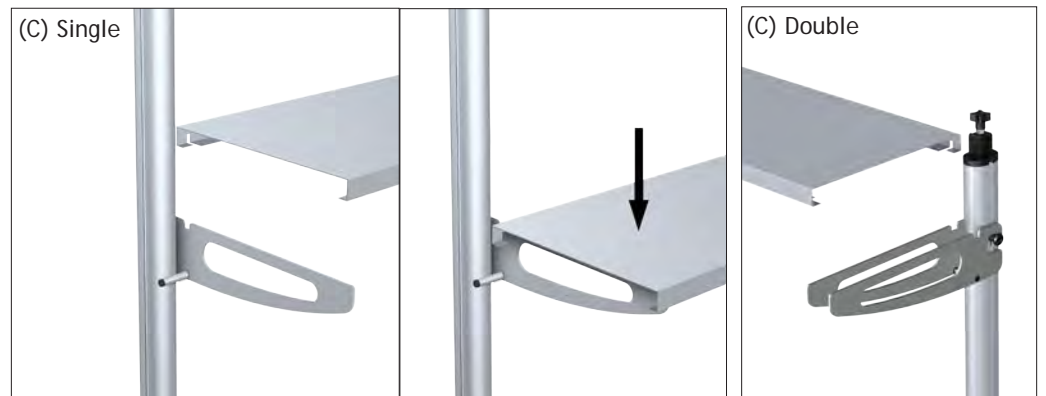
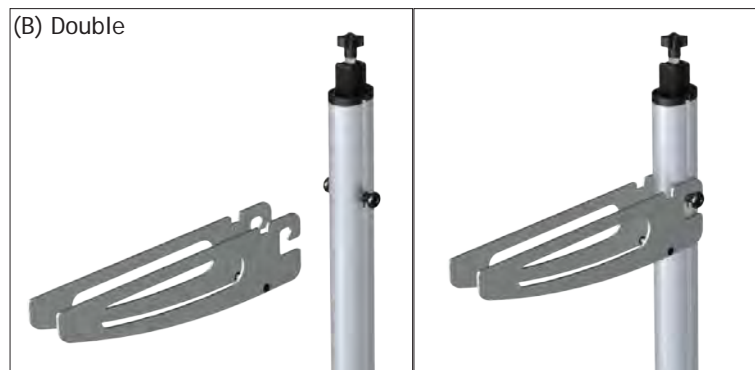
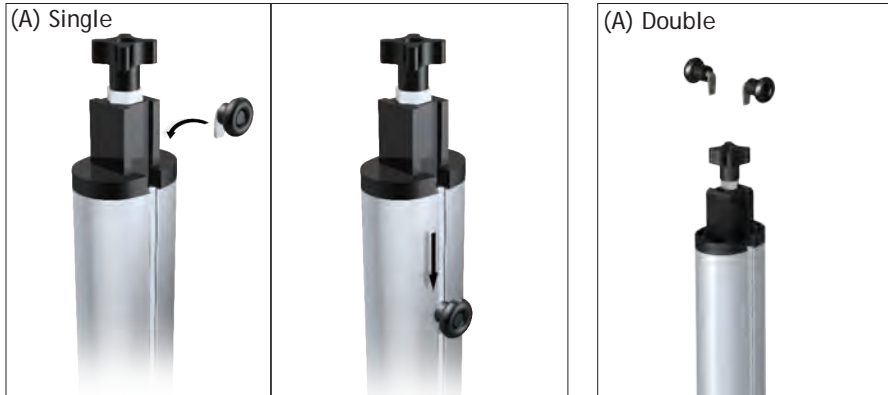
Visual Merchandising (Creo™)

Applicable Products:

Regular Shelf (CRST)
Single Bracket (CRSB)
Double Bracket (CRDB)

**NOTE: Most upright components must be installed before completing unit assembly.
End user determines component location.**

1. Insert knob rest glides into upright channels. Slide knob rests to desired location (fig. A).
2. Hook shelf brackets over knob rests and tighten knobs (fig. B).
3. Align notched sections of shelf with notched sections of shelf brackets to complete assembly (fig. C).



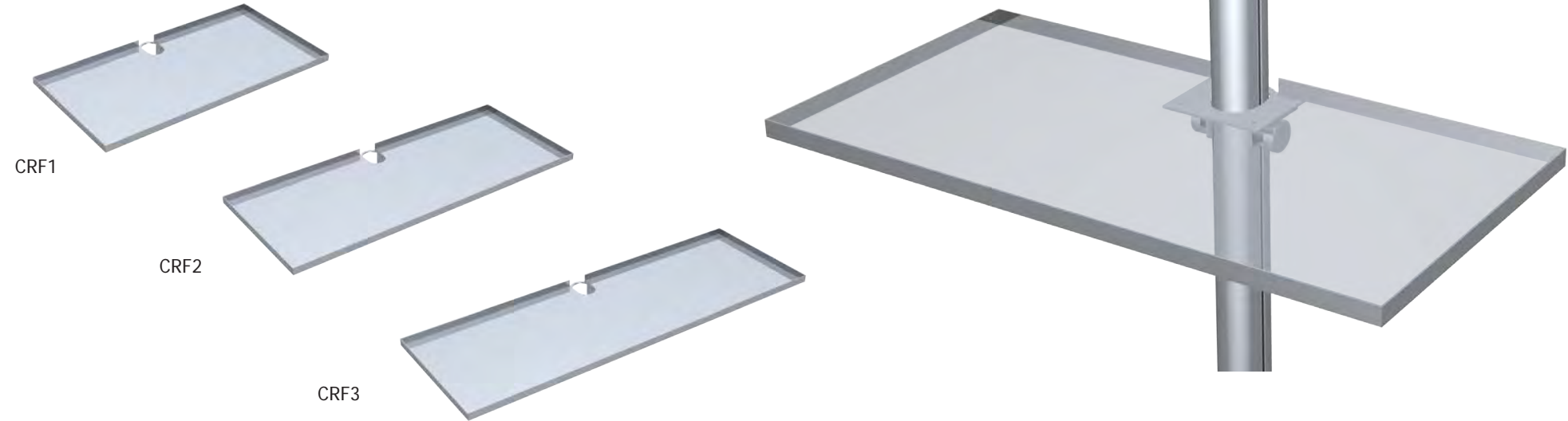
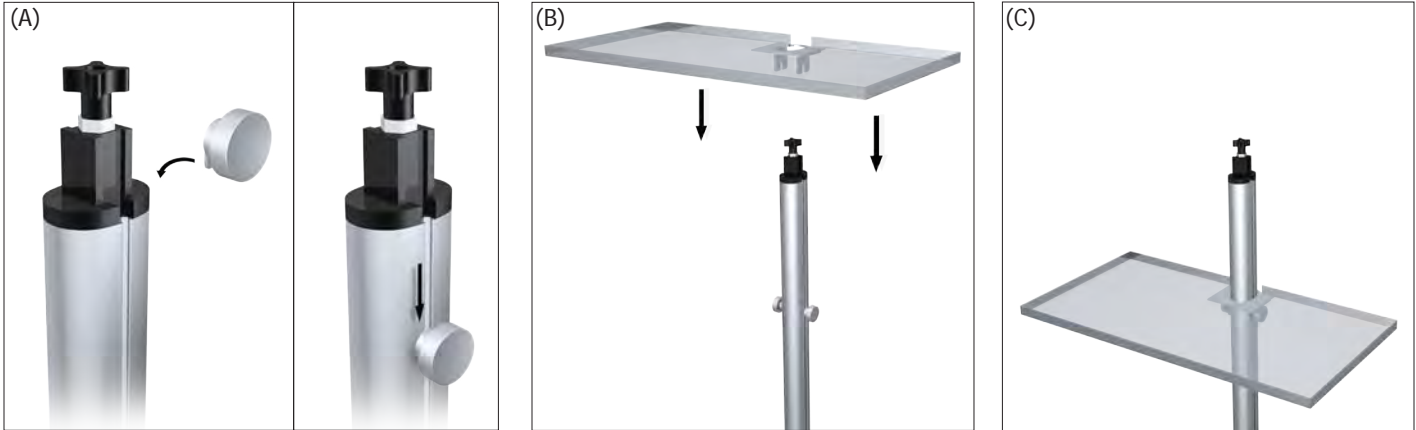
Visual Merchandising (Creo™)

Applicable Products:

Rectangular Shelf (CRF)

**NOTE: Most upright components must be installed before completing unit assembly.
End user determines component location.**

- 1. Insert puck glides into upright channel. Slide pucks to temporary location (fig. A).
- 2. Align shelf bracket with puck (fig. B).
- 3. Sandwich bracket in between upright and puck and tighten puck to secure (fig. C).



Visual Merchandising (Creo™)

Applicable Products:

Vitrine (CRVTR)

**NOTE: Most upright components must be installed before completing unit assembly.
End user determines component location.**

- Insert glides into upright channel (fig. A). **Repeat 2x.**
- Align holes of vitrine with both glides (fig. B).
- Screw puck heads onto glides (fig. C).
- Tighten pucks to secure vitrine. (fig. D).



Visual Merchandising (Creo™)

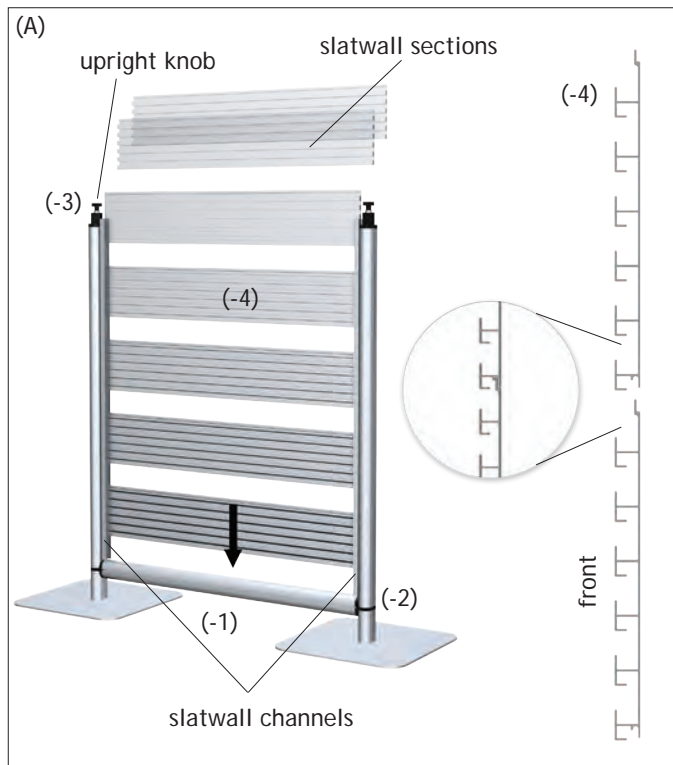
Applicable Products:

Creo Slatwall

**NOTE: Most upright components must be installed before completing unit assembly.
End user determines component location.**

1. Press bottom crossbar into base upright channels (fig. A-1).
2. Place uprights (with slatwall channel facing towards the inside) over base uprights (fig. A-2) and tighten upright knobs to secure (fig. A-3).
3. Slide slatwall sections down the slatwall channels and interlock them as shown (fig. A-4).
4. Add additional uprights/slatwalls as needed (fig. B).
5. Press top crossbar into upright channels (fig. C-1). Place cones on top of uprights and tighten cones to secure unit (fig. C-2).

NOTE: Unit shown below may differ from your model, but assembly instructions remain the same.



Visual Merchandising (Creo)

Applicable Products:

Cone Top Caps

1. Slide cones over uprights and tighten cones to secure.
2. Place Figure 8 Caps over cone tops and use knobs to secure.



NOTE: CREO instruction sheets are meant to act as a reference guide to help you install your unit. In some cases, images shown in the instruction sheet will differ from your custom product. However, the installation concepts remain the same. End user will determine where additional components are placed. Please refer to additional CREO instruction sheets where applicable. Most importantly: **Always remember to work from the bottom up!**

Wall Mount Upright - CRUW (Creo™)

1. Mount bottom bracket against wall using screws provided, approximately 6" above the floor.
2. Slide upright through bracket and allow upright to rest on the floor.
3. Slide upper bracket over upper bracket over upright and mount to wall using screws provided, approximately 6" below the top of the upright.

NOTE: Model shown below may differ from your model. Although the number of upright sections may change, assembly instructions remain the same.



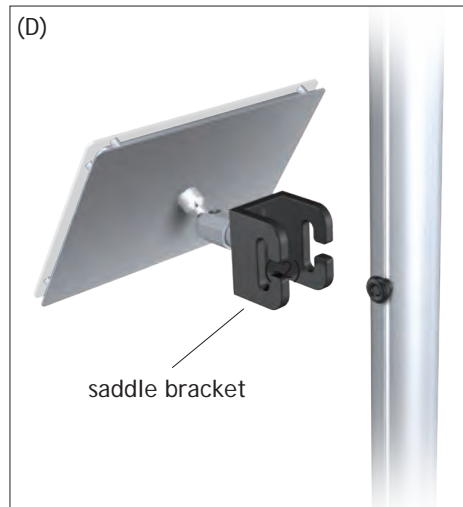
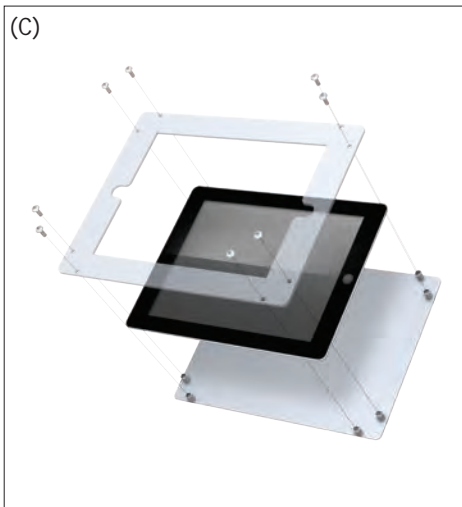
Visual Merchandising (Creo™)

Applicable Products:

iPad Holder (CRIH)

**NOTE: Most upright components must be installed before completing unit assembly.
End user determines component location.**

1. Insert knob rests into upright channels; one knob rest per side (fig. A & B).
2. Remove acrylic cover using small tamper-proof key provided. Place tablet inside and reassemble unit (fig. C). If ball joint loosens on back, use the large tamper-proof key to retighten it securely.
3. Hook saddle bracket over knob rests and tighten knob rests to secure unit (fig. D).



Visual Merchandising (Creo)

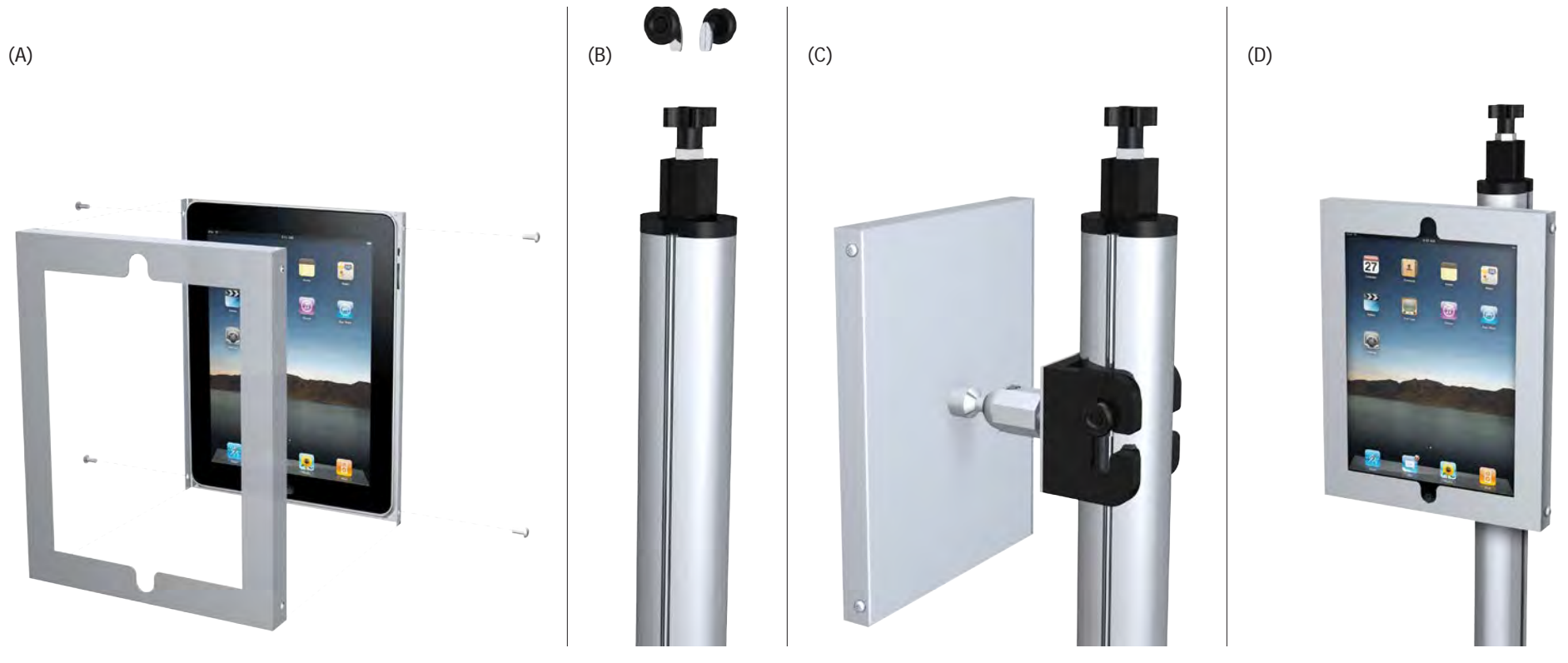
**NOTE: Most upright components must be installed before completing unit assembly.
End user determines component location.**

1. To Insert (or remove) iPad: first use key provided to unscrew 4 screws, then detach front face of iPad Holder. Once in place, slip cover back on and tighten the 4 screws. (fig. A).
2. Insert puck glides into upright channel and tighten at desired location (fig. B).
3. Hook iPad Holder bracket over pucks and tighten pucks to secure (fig. C).

Note: The iPad Holder swivels but can be mounted stationary using additional key provided.

Applicable Products:

iPad Holder (CRIH)



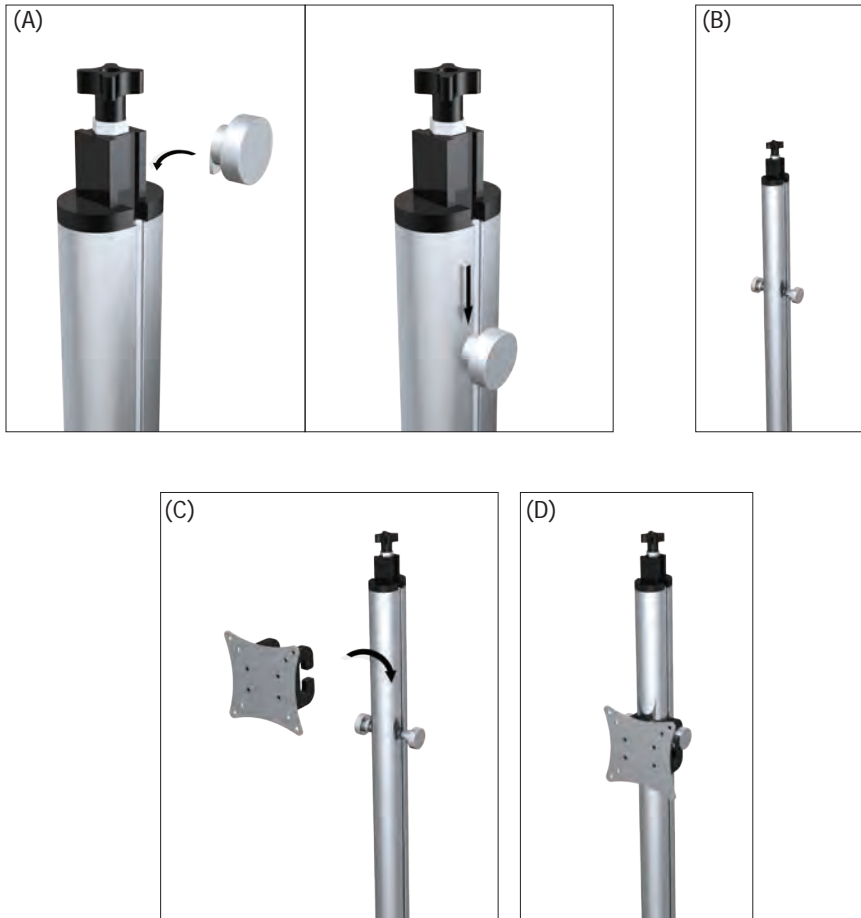
Visual Merchandising (Creo™)

Applicable Products:

Plasma Bracket (CRVA)
Plasma Bracket (CRVX)

**NOTE: Most upright components must be installed before completing unit assembly.
End user determines component location.**

1. Insert puck glides into upright channel (fig. A).
2. Slide pucks to temporary location (fig. B).
3. Hook plasma bracket over pucks (fig. C).
4. Tighten pucks to secure unit (fig. D).
5. Mount TV to bracket.



Visual Merchandising (Creo™)

Applicable Products:

Plasma Brackets (CRPB)

**NOTE: Most upright components must be installed before completing unit assembly.
End user determines component location.**

1. Insert puck glides into bottom crossbar channel (fig. A-1). Slide puck glides to desired location (fig. A-2).
2. Hook video bracket over top crossbar (fig. B-1) and align bottom hole with puck glide on bottom crossbar (fig. B-2).
3. Screw puck onto puck glide to secure brackets (fig. C-1 & fig. C-2).
4. Screw TV unit onto brackets (fig. D).

